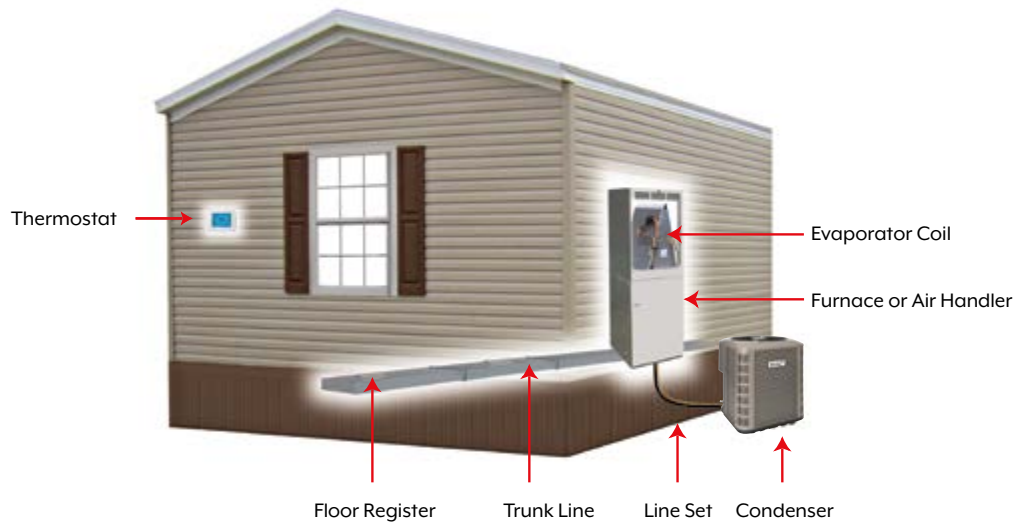


HEATING, VENTILATION, AND AIR CONDITIONING Products Catalog

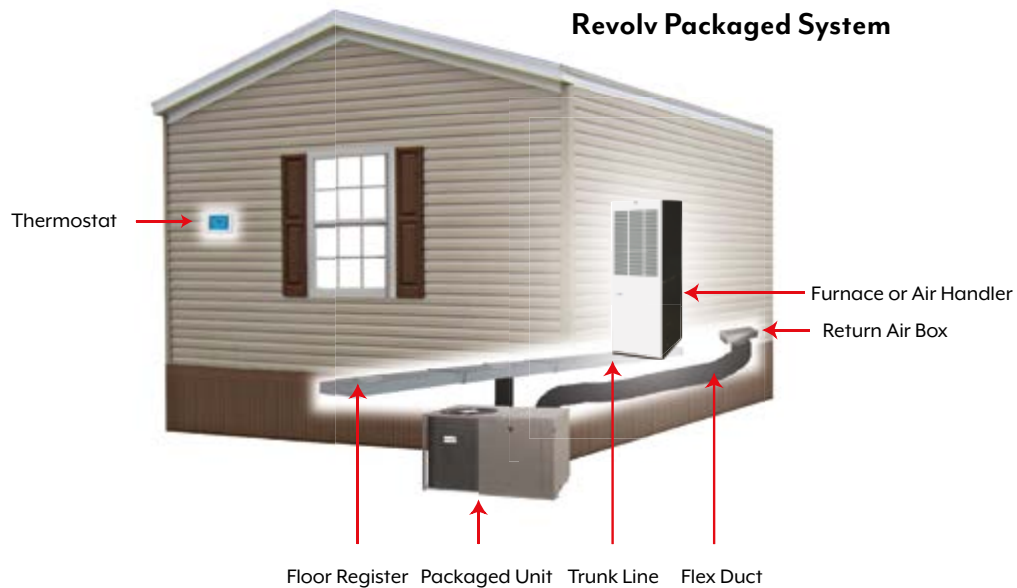


*Indoor Comfort Products Brought to You
by the Manufactured Home Experts!*





A **Revolv Split System** can provide both heating and/or cooling, that is split into two primary sections—outdoor and indoor. A complete HVAC system would consist of an indoor coil attached (installed in a pressurized compartment) to a Furnace/Air Handler installed in the home, and is connected to the outdoor condenser by a refrigerant line set.



A **Revolv Packaged System** can provide both heating and cooling from one self-contained unit, placed outside of the home. Only air and electric connections must be made to connect the system to the home's prefabricated duct work. NOTE: HUD compliance requires a furnace be installed in a manufactured home, unless there is a written exemption for the home.

13 SEER Air Conditioning Sweat Fit Split Systems



- **Corner-Post Jacket Design** has independent louvered panels that are easily removed for service, while protecting the coils from yard debris and extreme weather.
- **Corner-Post Packaging** creates a gap around the entire unit, minimizing pressure on the unit structure and contact with the carton, so the unit arrives safely to your customer.
- **Micro-Channel Coil** minimizes cost and refrigerant charge, mounted on a composite drain pan that has molded steps and more drainage holes to prevent damage, in only 2 convenient footprints.
- **Dependable Warranty** handled directly by Style Crest's dedicated HVAC Team, offering the most competitive warranty coverage and service in the Manufactured Housing Industry.

13 SEER can only be installed in the Northern DOE Region.



Part No.	Model No.	Nominal Tons ¹	D x W x H Package; D x W x H	Pkg. Weight MOP	Sound MCA	Min. Pad Size	Suction Line Ø	Liquid Line Ø	Coil Part No. Coil Type	AHRI Certificate Number	Coil Height Min. Coil Box Height
RSCS183	RSAIBD4MISN18K	1.5	22-3/4" x 22-3/4" x 24-1/2" 27-1/2" x 27-1/2" x 27"	126 lbs 20 A	74 dB 12 A	24" x 24"	3/4"	3/8"	1836S4A Tube-in-Fin	201853341	18" 20"
RSCS243	RSAIBD4MISN24KA	2	22-3/4" x 22-3/4" x 24-1/2" 27-1/2" x 27-1/2" x 27"	136 lbs 25 A	74 dB 14.3 A	24" x 24"	3/4"	3/8"	1854S4A Tube-in-Fin	205782913	18-1/2" 20"
RSCS303	RSAIBD4MISN30K	2.5	22-3/4" x 22-3/4" x 28-1/2" 27-1/2" x 27-1/2" x 31"	133 lbs 30 A	74 dB 18.3 A	24" x 24"	3/4"	3/8"	1836S4A Tube-in-Fin	10619407	18" 20"
RSCS363	RSAIBD4MISN36K	3	22-3/4" x 22-3/4" x 28-1/2" 27-1/2" x 27-1/2" x 31"	137 lbs 35 A	76 dB 22 A	24" x 24"	3/4"2	3/8"	1854S4A Tube-in-Fin	10619406	18-1/2" 20"
RSCS423	RSAIBD4MISN42K	3.5	31-3/4" x 31-3/4" x 29-1/4" 35-1/2" x 35-1/2" x 31"	194 lbs 40 A	79 dB 23 A	32" x 32"	7/8"	3/8"	1854S4A Tube-in-Fin	10619403	18-1/2" 20"
RSCS483	RSAIBD4MISN48K	4	31-3/4" x 31-3/4" x 29-1/4" 35-1/2" x 35-1/2" x 31"	196 lbs 50 A	78 dB 28.6 A	32" x 32"	7/8"	3/8"	1847S4A Tube-in-Fin	201841653	22-1/2" 26"
RSCS483	RSAIBD4MISN48K	4	31-3/4" x 31-3/4" x 29-1/4" 35-1/2" x 35-1/2" x 31"	196 lbs 50 A	78 dB 28.6 A	32" x 32"	7/8"	3/8"	187848S4A Tube-in-Fin	201974564	19-1/2" 20"

1) Refer to AHRI listings for actual capacities and performance data.

2) Line set vapor line increases to 7/8" over 24 ft equivalent length.

14 SEER Air Conditioning Sweat Fit Split Systems



- **Corner-Post Jacket Design** has independent louvered panels that are easily removed for service, while protecting the coils from yard debris and extreme weather.
- **Corner-Post Packaging** creates a gap around the entire unit, minimizing pressure on the unit structure and contact with the carton, so the unit arrives safely to your customer.
- **Micro-Channel Coil** minimizes cost and refrigerant charge, mounted on a composite drain pan that has molded steps and more drainage holes to prevent damage, in only 2 convenient footprints.
- **Dependable Warranty** handled directly by Style Crest's dedicated HVAC Team, offering the most competitive warranty coverage and service in the Manufactured Housing Industry.

14 SEER can only be installed in the SE & SW DOE Regions through 12/31/2022.



Part No.	Model No.	Nominal Tons ¹	D x W x H	Pkg. Weight	Sound	Min. Pad Size	Suction Line Ø	Liquid Line Ø	Coil Part No.	AHRI Certificate Number	Coil Height
			Package: D x W x H	MOP	MCA				Coil Type		Min. Coil Box Height
RSCS184	RSABE4MISN18K	1.5	22-3/4" x 22-3/4" x 28-1/2" 27-1/2" x 27-1/2" x 31"	137 lbs 20 A	74 dB 12.4 A	24" x 24"	3/4"	3/8"	1836S4A Tube-in-Fin	201853340	18" 20"
RSCS244	RSABE4MISN24K	2	22-3/4" x 22-3/4" x 32-1/2" 27-1/2" x 27-1/2" x 35"	143 lbs 30 A	74 dB 17.5 A	24" x 24"	3/4"	3/8"	1836S4A Tube-in-Fin	10619416	18" 20"
RSCS304	RSABE4MISN30K	2.5	31-3/4" x 31-3/4" x 29-1/4" 35-1/2" x 35-1/2" x 31"	169 lbs 30 A	75 dB 18.5 A	32" x 32"	3/4"	3/8"	1836S4A Tube-in-Fin	10619415	18" 20"
RSCS364	RSABE4MISN36K	3	31-3/4" x 31-3/4" x 37-1/4" 35-1/2" x 35-1/2" x 39"	188 lbs 30 A	78 dB 19.1 A	32" x 32"	3/4" ²	3/8"	1854S4A Tube-in-Fin	10619414	18-1/2" 20"
RSCS424	RSABE4MISN42K	3.5	31-3/4" x 31-3/4" x 41-1/4" 35-1/2" x 35-1/2" x 43"	222 lbs 40 A	78 dB 23.8 A	32" x 32"	7/8"	3/8"	1854S4A Tube-in-Fin	10619411	18-1/2" 20"
RSCS484	RSABE4MISN48K	4	31-3/4" x 31-3/4" x 41-1/4" 35-1/2" x 35-1/2" x 43"	221 lbs 45 A	78 dB 26.2 A	32" x 32"	7/8"	3/8"	1847S4A Tube-in-Fin	201841640	22-1/2" 26"
RSCS484	RSABE4MISN48K	4	31-3/4" x 31-3/4" x 41-1/4" 35-1/2" x 35-1/2" x 43"	221 lbs 45 A	78 dB 26.2 A	32" x 32"	7/8"	3/8"	187848S4A Tube-in-Fin	201974567	19-1/2" 20"
RSCS604	RSABE4MISN60K	5	31-3/4" x 31-3/4" x 45-1/4" 35-1/2" x 35-1/2" x 47"	238 lbs 60 A	78 dB 35.6 A	32" x 32"	7/8" ³	3/8"	1847S4A Tube-in-Fin	202085608	22-1/2" 26"

1) Refer to AHRI listings for actual capacities and performance data.

2) Line set vapor line increases to 7/8" over 24 ft equivalent length.

3) Line set vapor line increases to 1-1/8" over 24 ft equivalent length.

14 SEER Heat Pump Sweat Fit Split Systems



- **Corner-Post Jacket Design** has independent louvered panels that are easily removed for service, while protecting the coils from yard debris and extreme weather.
- **Corner-Post Packaging** creates a gap around the entire unit, minimizing pressure on the unit structure and contact with the carton, so the unit arrives safely to your customer.
- **Micro-Channel Coil** minimizes cost and refrigerant charge, mounted on a composite drain pan that has molded steps and more drainage holes to prevent damage, in only 1 convenient footprint.
- **Dependable Warranty** handled directly by Style Crest's dedicated HVAC Team, offering the most competitive warranty coverage and service in the Manufactured Housing Industry.



Part No.	Model No.	Nominal Tons ¹	D x W x H <i>Package; D x W x H</i>	Pkg. Weight <i>MOP</i>	Sound <i>MCA</i>	Min. Pad Size	Suction Line Ø	Liquid Line Ø	Coil Part No. <i>Coil Type</i>	AHRI Certificate Number	Coil Height <i>Min. Coil Box Height</i>
RSHS244	RSHIBE4MISP24K	2	31-3/4" x 31-3/4" x 33-1/4" 35-1/2" x 35-1/2" x 35"	203 lbs 30 A	75 dB 17.7 A	32" x 32"	3/4"	3/8"	C8DAMX24U-B <i>Micro-Channel</i>	10615825	18" 20"
RSHS304	RSHIBE4MISP30K	2.5	31-3/4" x 31-3/4" x 41-1/4" 35-1/2" x 35-1/2" x 43"	220 lbs 25 A	75 dB 16.9 A	32" x 32"	3/4"	3/8"	C8DAMX30U-B <i>Micro-Channel</i>	10615830	18" 20"
RSHS364	RSHIBE4MISP36K	3	31-3/4" x 31-3/4" x 45-1/4" 35-1/2" x 35-1/2" x 47"	225 lbs 30 A	76 dB 18.6 A	32" x 32"	7/8"	3/8"	C8DAMX36U-B <i>Micro-Channel</i>	10615833	18" 20"
RSHS424	RSHIBE4MISP42K	3.5	31-3/4" x 31-3/4" x 45-1/4" 35-1/2" x 35-1/2" x 47"	245 lbs 40 A	79 dB 23.9 A	32" x 32"	7/8"	3/8"	C8DAMX42U-B <i>Micro-Channel</i>	10615837	25" 26"
RSHS484	RSHIBE4MISP48K	4	31-3/4" x 31-3/4" x 45-1/4" 35-1/2" x 35-1/2" x 47"	247 lbs 45 A	79 dB 26.3 A	32" x 32"	7/8"	3/8"	C8DAMX49U-B <i>Micro-Channel</i>	10615838	29" 31"

1) Refer to AHRI listings for actual capacities and performance data.

Sweat Fit Line Sets



Part No.	Length	Suction Line Ø	Liquid Line Ø	Suction Line Insulation Thickness
13S7525	25 ft	3/4"	3/8"	1/2"
13S7530	30 ft	3/4"	3/8"	1/2"
13S7550	50 ft	3/4"	3/8"	1/2"
13S7825	25 ft	7/8"	3/8"	1/2"
13S7830	30 ft	7/8"	3/8"	1/2"
13S7850	50 ft	7/8"	3/8"	1/2"
6463S204I	20 ft	3/4"	3/8"	1/2"
6463S254I	25 ft	3/4"	3/8"	1/2"
6463S304I	30 ft	3/4"	3/8"	1/2"
6463S504I	50 ft	3/4"	3/8"	1/2"
6473S204I	20 ft	7/8"	3/8"	1/2"
6473S254I	25 ft	7/8"	3/8"	1/2"
6473S304I	30 ft	7/8"	3/8"	1/2"
6473S504I	50 ft	7/8"	3/8"	1/2"

13 SEER Air Conditioning AccuCharge® Split Systems



- **Corner-Post Jacket Design** has independent louvered panels that are easily removed for service, while protecting the coils from yard debris and extreme weather.
- **Corner-Post Packaging** creates a gap around the entire unit, minimizing pressure on the unit structure and contact with the carton, so the unit arrives safely to your customer.
- **Micro-Channel Coil** minimizes cost and refrigerant charge, mounted on a composite drain pan that has molded steps and more drainage holes to prevent damage, in only 2 convenient footprints.
- **AccuCharge Quick-Connect Systems** consist of pre-charged equipment and line sets with unique connectors; to significantly reduce the time and skill-set needed to install a split system.
- **Dependable Warranty** handled directly by Style Crest's dedicated HVAC Team, offering the most competitive warranty coverage and service in the Manufactured Housing Industry.



13 SEER can only be installed in the Northern DOE Region.



Part No.	Model No.	Nominal Tons ¹	D x W x H Package; D x W x H	Pkg. Weight MOP	Sound MCA	Min. Pad Size	Suction Line Ø	Liquid Line Ø	Coil Part No. Coil Type	AHRI Certificate Number	Coil Height Min. Coil Box Height
RSCQ2431	RSAIQD4MIRN24KA	2	23-3/4" x 23-3/4" x 24-1/2" 27-1/2" x 27-1/2" x 27"	145 lbs 15 A	72 dB 11.1 A	24" x 24"	3/4"	3/8"	1854M4A Tube-in-Fin	206185397	18-1/2" 20"
RSCQ3031	RSAIQD4MIRN30KA	2.5	23-3/4" x 23-3/4" x 28-1/2" 27-1/2" x 27-1/2" x 31"	149 lbs 20 A	72 dB 13.1 A	24" x 24"	3/4"	3/8"	1854M4A Tube-in-Fin	206185396	18-1/2" 20"
RSCQ3631	RSAIQD4MIRN36KA	3	23-3/4" x 23-3/4" x 28-1/2" 27-1/2" x 27-1/2" x 31"	151 lbs 25 A	73 dB 16.4 A	24" x 24"	3/4" ²	3/8"	1854M4A Tube-in-Fin	206144642	18-1/2" 20"
RSCQ423	RSAIQD4MISN42K	3.5	31-3/4" x 31-3/4" x 29-1/4" 35-1/2" x 35-1/2" x 31"	193 lbs 40 A	78 dB 23 A	32" x 32"	7/8"	3/8"	1854M4A Tube-in-Fin	201841646	18-1/2" 20"
RSCQ483	RSAIQD4MISN48K	4	31-3/4" x 31-3/4" x 29-1/4" 35-1/2" x 35-1/2" x 31"	193 lbs 50 A	78 dB 28.6 A	32" x 32"	7/8"	3/8"	1847M4A Tube-in-Fin	201841642	22-1/2" 26"
RSCQ483	RSAIQD4MISN48K	4	31-3/4" x 31-3/4" x 29-1/4" 35-1/2" x 35-1/2" x 31"	193 lbs 50 A	78 dB 28.6 A	32" x 32"	7/8"	3/8"	18748M4A Tube-in-Fin	201974563	19-1/2" 20"

1) Refer to AHRI listings for actual capacities and performance data.

2) Line set vapor line increases to 7/8" over 24 ft equivalent length.

14 SEER Air Conditioning AccuCharge® Split Systems



- **Corner-Post Jacket Design** has independent louvered panels that are easily removed for service, while protecting the coils from yard debris and extreme weather.
- **Corner-Post Packaging** creates a gap around the entire unit, minimizing pressure on the unit structure and contact with the carton, so the unit arrives safely to your customer.
- **Micro-Channel Coil** minimizes cost and refrigerant charge, mounted on a composite drain pan that has molded steps and more drainage holes to prevent damage, in only 2 convenient footprints.
- **AccuCharge Quick-Connect Systems** consist of pre-charged equipment and line sets with unique connectors; to significantly reduce the time and skill-set needed to install a split system.
- **Dependable Warranty** handled directly by Style Crest's dedicated HVAC Team, offering the most competitive warranty coverage and service in the Manufactured Housing Industry.

14 SEER can only be installed in the SE & SW DOE Regions through 12/31/2022.



Part No.	Model No.	Nominal Tons ¹	D x W x H Package; D x W x H	Pkg. Weight MOP	Sound MCA	Min. Pad Size	Suction Line Ø	Liquid Line Ø	Coil Part No. Coil Type	AHRI Certificate Number	Coil Height Min. Coil Box Height
RSCQ244	RSAIQE4MIRN24K	2	22-3/4" x 22-3/4" x 32-1/2" 27-1/2" x 27-1/2" x 35"	138 lbs 15 A	72 dB 11.1 A	24" x 24"	3/4"	3/8"	1836M4A Tube-in-Fin	201841639	18" 20"
RSCQ304	RSAIQE4MIRN30K	2.5	31-3/4" x 31-3/4" x 29-1/4" 35-1/2" x 35-1/2" x 31"	167 lbs 20 A	73 dB 13.3 A	32" x 32"	3/4"	3/8"	1836M4A Tube-in-Fin	201841638	18" 20"
RSCQ364	RSAIQE4MISN36K	3	31-3/4" x 31-3/4" x 37-1/4" 35-1/2" x 35-1/2" x 39"	179 lbs 30 A	79 dB 19.1 A	32" x 32"	3/4" ²	3/8"	1854M4A Tube-in-Fin	201841634	18-1/2" 20"
RSCQ424	RSAIQE4MISN42K	3.5	31-3/4" x 31-3/4" x 41-1/4" 35-1/2" x 35-1/2" x 43"	219 lbs 40 A	79 dB 23.8 A	32" x 32"	7/8"	3/8"	1854M4A Tube-in-Fin	201841632	18-1/2" 20"
RSCQ484	RSAIQE4MISN48K	4	31-3/4" x 31-3/4" x 41-1/4" 35-1/2" x 35-1/2" x 43"	219 lbs 45 A	75 dB 26.2 A	32" x 32"	7/8"	3/8"	1847M4A Tube-in-Fin	201841631	22-1/2" 26"
RSCQ484	RSAIQE4MISN48K	4	31-3/4" x 31-3/4" x 41-1/4" 35-1/2" x 35-1/2" x 43"	219 lbs 45 A	75 dB 26.2 A	32" x 32"	7/8"	3/8"	187848M4A Tube-in-Fin	201974567	19-1/2" 20"

1) Refer to AHRI listings for actual capacities and performance data. 2) Line set vapor line increases to 7/8" over 24 ft equivalent length.

14 SEER Heat Pump AccuCharge® Split Systems



- **Corner-Post Jacket Design** has independent louvered panels that are easily removed for service, while protecting the coils from yard debris and extreme weather.
- **Corner-Post Packaging** creates a gap around the entire unit, minimizing pressure on the unit structure and contact with the carton, so the unit arrives safely to your customer.
- **Micro-Channel Coil** minimizes cost and refrigerant charge, mounted on a composite drain pan that has molded steps and more drainage holes to prevent damage, in only 1 convenient footprint.
- **AccuCharge Quick-Connect Systems** consist of pre-charged equipment and line sets with unique connectors; to significantly reduce the time and skill-set needed to install a split system.
- **Dependable Warranty** handled directly by Style Crest's dedicated HVAC Team, offering the most competitive warranty coverage and service in the Manufactured Housing Industry.



Part No.	Model No.	Nominal Tons ¹	D x W x H Package; D x W x H	Pkg. Weight MOP	Sound MCA	Min. Pad Size	Suction Line Ø	Liquid Line Ø	Coil Part No. Coil Type	AHRI Certificate Number	Coil Height Min. Coil Box Height
RSHQ244	RSHIQE4MISP24K	2	31-3/4" x 31-3/4" x 33-1/4" 35-1/2" x 35-1/2" x 35"	203 lbs 30 A	75 dB 17.7 A	32" x 32"	3/4"	3/8"	C8QAMX24U-B Micro-Channel	10615839	18" 20"
RSHQ304	RSHIQE4MISP30K	2.5	31-3/4" x 31-3/4" x 41-1/4" 35-1/2" x 35-1/2" x 43"	220 lbs 25 A	75 dB 16.9 A	32" x 32"	3/4"	3/8"	C8QAMX30U-B Micro-Channel	10615840	18" 20"
RSHQ364	RSHIQE4MISP36K	3	31-3/4" x 31-3/4" x 45-1/4" 35-1/2" x 35-1/2" x 47"	225 lbs 30 A	76 dB 18.6 A	32" x 32"	7/8"	3/8"	C8QAMX36U-B Micro-Channel	10615841	18" 20"
RSHQ424	RSHIQE4MISP42K	3.5	31-3/4" x 31-3/4" x 45-1/4" 35-1/2" x 35-1/2" x 47"	245 lbs 40 A	79 dB 23.9 A	32" x 32"	7/8"	3/8"	C8QAMX42U-B Micro-Channel	10615842	25" 26"
RSHQ484	RSHIQE4MISP48K	4	31-3/4" x 31-3/4" x 45-1/4" 35-1/2" x 35-1/2" x 47"	247 lbs 45 A	79 dB 26.3 A	32" x 32"	7/8"	3/8"	C8QAMX49U-B Micro-Channel	10615843	29" 31"

1) Refer to AHRI listings for actual capacities and performance data.

AccuCharge® R-410A Line Sets



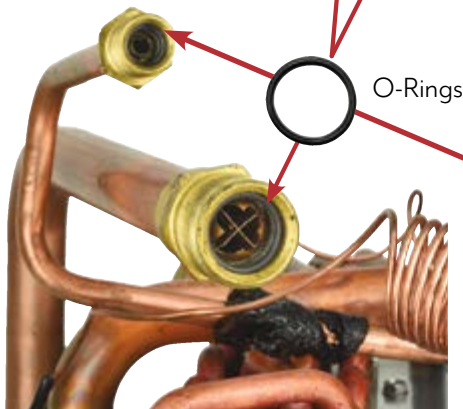
POE Oil Packet
Included

Part No.	Length	Suction Line Ø	Liquid Line Ø	Suction Line Insulation Thickness
4463Q153I	15 ft	3/4"	3/8"	3/8"
4463Q203I	20 ft	3/4"	3/8"	3/8"
4463Q253I	25 ft	3/4"	3/8"	3/8"
4463Q303I	30 ft	3/4"	3/8"	3/8"
4463Q403I	40 ft	3/4"	3/8"	3/8"
4463Q503I	50 ft	3/4"	3/8"	3/8"
4473Q153I	15 ft	7/8"	3/8"	3/8"
4473Q203I	20 ft	7/8"	3/8"	3/8"
4473Q253I	25 ft	7/8"	3/8"	3/8"
4473Q303I	30 ft	7/8"	3/8"	3/8"
4473Q403I	40 ft	7/8"	3/8"	3/8"
4473Q503I	50 ft	7/8"	3/8"	3/8"
4473Q703I	70 ft	7/8"	3/8"	3/8"

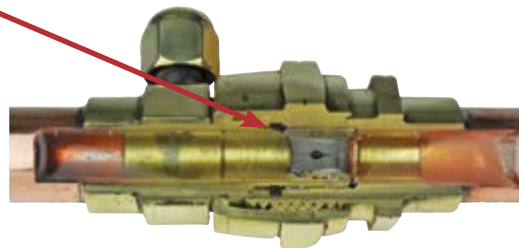
Condenser FitRight® Fittings



AccuCharge Line Set with FitRight® Fittings



Indoor Coil FitRight® Fittings



Connected FitRight® Fittings Cutaway View

Tube-in-Fin R-410A MH Indoor A-Coils - Sweat Fit



- **Designed Exclusively for Manufactured Housing** with optimized airflow and compatibility with most new and existing MH furnaces, which makes these the perfect choice to complete a home-comfort system.
- **Most Compatible Line** of indoor evaporator coils in the industry; already AHRI-matched with many popular condenser brands and models, including heat pumps. Check out our website, www.stylecrestinc.com/ahri-match.
- **Pre-installed TXV and Sensing Bulb** for quicker installations, suitable for air conditioners and heat pumps, with a built-in strainer for longer service life.
- **Code-Compliant Drain Pan** with a 2-opening design to prevent standing water that can adversely affect air quality and health. A metal drain pan is available to special order, recommended for oil upflow applications.
- **UL-Listed and Leak Tested** to 500psig for construction-safety and quality, giving the homeowner peace of mind.
- **Coil Accessory Kit** Included to avoid nuisance return trips to the service truck or supply house for parts that are commonly field-supplied.
- **Dependable Warranty** handled directly by Style Crest's dedicated HVAC Team, offering the most competitive warranty coverage and service in the Manufactured Housing Industry.

Part No.	Model No.	D x W x H Package: D x W x H	Pkg. Weight	Replacement TXV Part No.	Coil Rows	Suction Line Ø	Liquid Line Ø	Coil Height	Min. Coil Box Height ¹
1829S4A	1829S4A	19-5/8" x 18" x 18-1/2" 25-3/4" x 19-1/2" x 19-3/4"	38 lbs	18R72DB0003	4	7/8"	3/8"	18-1/2"	20"
1830S4A	1830S4A	19-5/8" x 18" x 14" 25-3/4" x 19-3/4" x 15-3/4"	30 lbs	18R72DB0003	3	3/4"	3/8"	14"	20"
1836S4A	1836S4A	19-5/8" x 18" x 18" 25-3/4" x 19-1/2" x 19-3/4"	33 lbs	18R72DB0003	3	7/8"	3/8"	18"	20"
1837S4A	1837S4A	20-1/2" x 18" x 20-1/2" 25-1/2" x 19-3/4" x 22-1/4"	46 lbs	18R72DB0004	4	7/8"	3/8"	20-1/2"	26"
1841S4A	1841S4A	19-5/8" x 18" x 24-1/2" 26-1/4" x 19-1/4" x 25-3/4"	48 lbs	18R72DB0004	4	7/8"	3/8"	24-1/2"	26"
1844S4A	1844S4A	19-5/8" x 18" x 18-1/2" 25-3/4" x 19-1/2" x 19-3/4"	38 lbs	18R72DB0004	4	7/8"	3/8"	18-1/2"	20"
1845S4A	1845S4A	19-5/8" x 18" x 24" 26-1/4" x 19-1/4" x 25-3/4"	37 lbs	18R72DB0004	3	7/8"	3/8"	24"	26"
1847S4A	1847S4A	19-5/8" x 18" x 22-1/2" 26-1/4" x 19-1/4" x 25-3/4"	47 lbs	18R72DB0004	4	7/8"	3/8"	22-1/2"	26"
1851S4A	1851S4A	20-1/2" x 18" x 18-1/2" 25-3/4" x 19-1/2" x 19-3/4"	38 lbs	18R72DB0004	4	7/8"	3/8"	18-1/2"	20"
1854S4A	1854S4A	19-5/8" x 18" x 18-1/2" 25-3/4" x 19-1/2" x 19-3/4"	38 lbs	18R72DB0004	4	7/8"	3/8"	18-1/2"	20"
1855S4A	1855S4A	19-5/8" x 18" x 20-1/2" 25-1/2" x 19-3/4" x 22-1/4"	45 lbs	18R72DB0004	4	7/8"	3/8"	20-1/2"	26"
1856S4A	1856S4A	19-5/8" x 18" x 24-1/2" 26-1/4" x 19-1/4" x 25-3/4"	49 lbs	18R72DB0004	4	7/8"	3/8"	24-1/2"	26"
187848S4A	187848S4A	19-5/8" x 18" x 19-1/2" 25-1/2" x 19-3/4" x 22-1/4"	36 lbs	18R72DB0004	4	7/8"	3/8"	19-1/2"	20"

1) Consider existing coil box cavity depth, width, height, and nominal opening for proper fit-up, particularly with competitive furnaces and coil boxes.

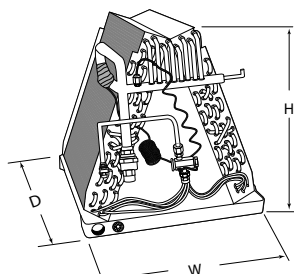
Tube-in-Fin R-410A MH Indoor A-Coils - AccuCharge®



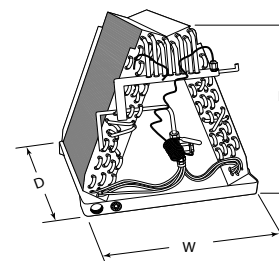
- **Designed Exclusively for Manufactured Housing** with optimized airflow and compatibility with most new and existing MH furnaces, which makes these the perfect choice to complete a home-comfort system.
- **Quick-Connect (AccuCharge®) Coils** can significantly reduce the time, initial cost, and skillset needed to install a central-air, split system.
- **Most Compatible Line** of indoor evaporator coils in the industry; already AHRI-matched with many popular condenser brands and models, including heat pumps. Check out our website, www.stylecrestinc.com/ahri-match.
- **Pre-installed TXV and Sensing Bulb** for quicker installations, suitable for air conditioners and heat pumps, with a built-in strainer for longer service life.
- **Code-Compliant Drain Pan** with a 2-opening design to prevent standing water that can adversely affect air quality and health. A metal drain pan is available to special order, recommended for oil upflow applications.
- **UL-Listed and Leak Tested** to 500psig for construction-safety and quality, giving the homeowner peace of mind.
- **Coil Accessory Kit Included** to avoid nuisance return trips to the service truck or supply house for parts that are commonly field-supplied.
- **Dependable Warranty** handled directly by Style Crest's dedicated HVAC Team, offering the most competitive warranty coverage and service in the Manufactured Housing Industry.

Part No.	Model No.	D x W x H	Pkg. Weight	Replacement TXV Part No.	Coil Rows	Suction Line Ø	Liquid Line Ø	Coil Height	Min. Coil Box Height
		Package; D x W x H							
1836M4A	1836M4A	19-5/8" x 18" x 18" 25-3/4" x 19-1/2" x 19-3/4"	33 lbs	18R72DB0003	3	7/8"	3/8"	18"	20"
1847M4A	1847M4A	19-5/8" x 18" x 22-1/2" 26-1/4" x 19-1/4" x 25-3/4"	47 lbs	18R72DB0004	4	7/8"	3/8"	22-1/2"	26"
1854M4A	1854M4A	19-5/8" x 18" x 18-1/2" 25-3/4" x 19-1/2" x 19-3/4"	38 lbs	18R72DB0004	4	7/8"	3/8"	18-1/2"	20"
187848M4A	187848M4A	19-5/8" x 18" x 19-1/2" 25-1/2" x 19-3/4" x 22-1/4"	36 lbs	18R72DB0004	4	7/8"	3/8"	19-1/2"	20"

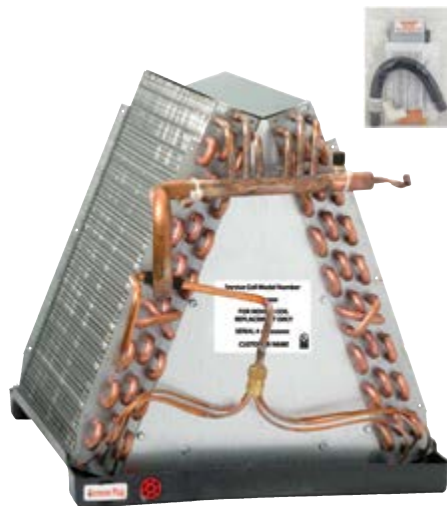
- 1) Consider existing coil box cavity depth, width, height, and nominal opening for proper fit-up, particularly with competitive furnaces and coil boxes.
- 2) See our AccuCharge Split System Sell Sheets for the FitRight® coils, line sets, AND condensers that comprise a complete AccuCharge system.



Important: A coil is only a component of an AHRI rated split system. A rated split system always requires a unique coil and unique condenser (by Brand), and may further require a unique furnace model, for the rating to be valid.



Indoor Service A-Coils



- **Unique MH A-coil Design** to fit the standard footprint found in most HUD homes for the last 25 years.
- **Homeowner's Peace of Mind** from quality coil construction; UL-Listed, leak tested to 500psig and shipped from the factory with a 200+ psig nitrogen charge to preserve coil integrity and prevent contamination.
- **Save Customers Money** by changing out only the leaking coil (component), rather than the entire split system (possibly the furnace), where you must bring a new system up to current DOE minimums.
- **Code-Compliant Drain Pan** with a 2-opening design to prevent standing water that can adversely affect air quality and occupant health.
- **Coil Accessory Kit Included** to avoid nuisance return trips to the service truck or supply house for parts that are commonly field-supplied.
- **Dependable Warranty and Support**, with the most competitive warranty coverage & service in the MH Industry; handled directly by Style Crest's dedicated HVAC Team.

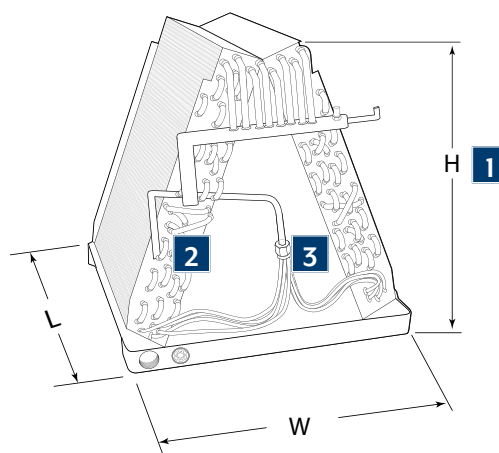
These service coils CANNOT be used for a NEW split system installation.

Part No.	D x W x H	Pkg. Weight	Coil Rows	Piston Size	Suction Line Ø	Liquid Line Ø	Charge
	Package; D x W x H		Coil Face-Area				
MHSC200T	19-5/8" x 18" x 14"	32 lbs	3	0.061	7/8"	3/8"	200+PSI Nitrogen
	25-1/2" x 19-3/4" x 22-1/4"		3.11 ft ²				
MHSC300T	19-5/8" x 18" x 18"	34 lbs	3	0.066	7/8"	3/8"	200+PSI Nitrogen
	25-3/4" x 19-1/2" x 19-3/4"		4.00 ft ²				
MHSC400T	19-5/8" x 18" x 18-1/2"	38 lbs	4	0.073	7/8"	3/8"	200+PSI Nitrogen
	25-3/4" x 19-1/2" x 19-3/4"		4.00 ft ²				

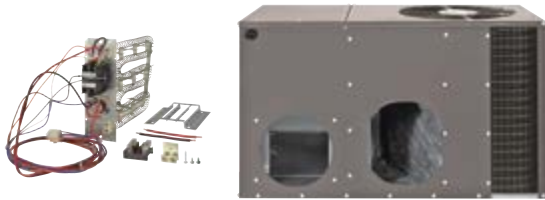
IMPORTANT: Carefully relieve the factory nitrogen charge in accordance with the installation instructions, prior to installation of the new service coil.

Choosing Your New Service Coil

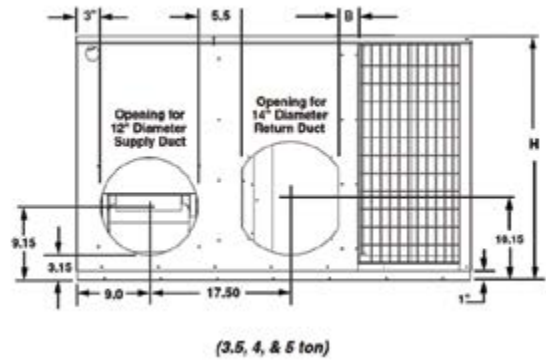
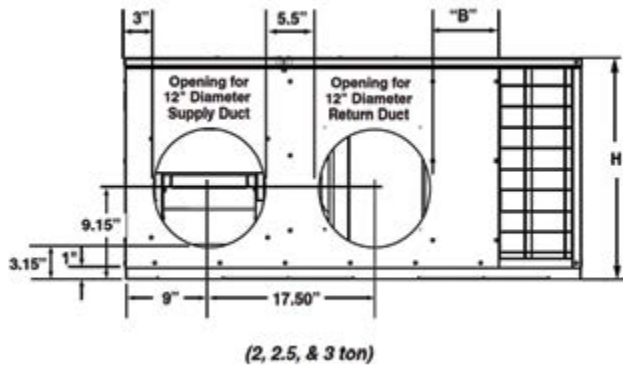
- 1 Measure the height of the coil being replaced—choose the service coil with the nearest height to the coil you are replacing. Be certain the new coil has at least the same face area as the original coil.
- 2 Count the number of rows of tubes along one side of the A-coil (normally 2-4 rows). Choose the service coil with the same number of rows as the coil being replaced.
- 3 Use the correct metering device as described in the condenser manufacturer's specifications or installation instructions. You should be able to remove and reuse the metering device used with the old A-coil and install it on the new service coil. Each service coil is shipped with a piston common for many applications.



14 SEER Air Conditioning Packaged Units



- **Compact Footprint** makes them easy to install and transport, fitting some of the most aggressive lot lines that are trouble for leading competitors.
- **High-Static Blower** utilizes a high-efficiency, 5-speed, fixed-torque DC ECM.
- **Advanced Refrigeration Technology** including a factory-installed, liquid line filter-drier.
- **Optional Electric Heater Kits** are available for field-installation in Air Conditioners or Heat Pumps, ranging from 5-15 kW output.
- **Convenient Service Access** to all control components, compressor, evaporator coil, and indoor blower; with perimeter high and low-side service ports.
- **Aluminum Micro-Channel Coils** for both evaporator and condenser that are designed to optimize heat transfer, minimize footprint, decrease materials cost, reduce refrigerant volume, and resist formicary corrosion to support long service-life.
- **All DOE Regions** can utilize the same models for simplified stocking throughout your entire distribution and installation networks.
- **Dependable Warranty and Support**, handled directly by Style Crest's dedicated HVAC Team; offering the most competitive warranty coverage and service, in the Manufactured Housing Industry.

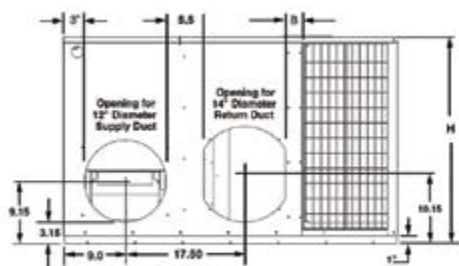
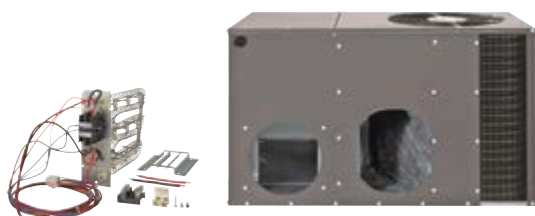


Part No.	Model No.	Nominal Tons ¹	D x W x H Package: D x W x H	Pkg. Weight MOP ²	Supply Air	Return Air	Sound MCA ²	Min. Pad Size	Rated Cooling Output	EER	AHRI Certificate Number
RPC1418	RP7RE-018K	1.5	49" x 35" x 22-13/64" 51" x 37" x 23"	238 lbs 20 A	Side, Ducted	Side, Ducted	73 dB 13.2 A	35" x 49"	17.8 MBH	11	9008594
RPC1424	RP7RE-024K	2	49" x 35" x 22-13/64" 51" x 37" x 23"	242 lbs 20 A	Side, Ducted	Side, Ducted	73 dB 15.2 A	35" x 49"	23.8 MBH	11	8657694
RPC1430	RP7RE-030K	2.5	49" x 35" x 22-13/64" 51" x 37" x 23"	248 lbs 25 A	Side, Ducted	Side, Ducted	73 dB 17.2 A	35" x 49"	28.4 MBH	11	8657695
RPC1436	RP7RE-036K	3	49" x 35" x 22-13/64" 51" x 37" x 23"	242 lbs 40 A	Side, Ducted	Side, Ducted	76 dB 25.7 A	35" x 49"	35 MBH	11	8657696
RPC1442	RP7RE-042K	3.5	49" x 35" x 30-13/64" 51" x 37" x 32"	297 lbs 45 A	Side, Ducted	Side, Ducted	76 dB 29.3 A	35" x 49"	40.5 MBH	11	8657697
RPC1448	RP7RE-048KA	4	49" x 35" x 30-13/64" 51" x 37" x 31"	300 lbs 50 A	Side, Ducted	Side, Ducted	78 dB 34.2 A	35" x 49"	46.5 MBH	11	204005880
RPC1460	RP7RE-X60KA	5	49" x 35" x 34-13/64" 51" x 37" x 35"	325 lbs 60 A	Side, Ducted	Side, Ducted	78 dB 38.9 A	35" x 49"	56 MBH	11	10084023

1) Refer to AHRI listings for actual capacities and performance data.

NOTE: Electrical data for unit-only, which does not include any field-installed electric heater additions.

14 SEER Heat Pump Packaged Units



(3.5, 4, & 5 ton)

- **Compact Footprint** makes them easy to install and transport, fitting some of the most aggressive lot lines that are trouble for leading competitors.
- **High-Static Blower** utilizes a high-efficiency, 5-speed, fixed-torque, brushless-DC ECM.
- **Advanced Refrigeration Technology** including a factory-installed, Bi-flow, liquid line filter-drier, patented hot gas defrost, and a factory-supplied Bi-metallic Outdoor Thermostat.
- **Optional Electric Heater Kits** are available for field-installation in Air Conditioners or Heat Pumps, ranging from 5-15 kW output.
- **Convenient Service Access** to all control components, compressor, evaporator coil, and indoor blower; with perimeter high and low-side service ports.
- **Aluminum Micro-Channel Coils** for both evaporator and condenser that are designed to optimize heat transfer, minimize footprint, decrease materials cost, reduce refrigerant volume, and resist formicary corrosion to support long service-life.
- **All DOE Regions** can utilize the same models for simplified stocking throughout your entire distribution and installation networks.
- **Dependable Warranty and Support**, handled directly by Style Crest's dedicated HVAC Team; offering the most competitive warranty coverage and service, in the Manufactured Housing Industry.

Part No.	Model No.	Nominal Tons ¹	D x W x H Package; D x W x H	Pkg. Weight MOP	Supply Air	Return Air	Sound MCA	Min. Pad Size	Rated Heating Output	EER	HSPF	AHRI Certificate Number
RPH1424	RQ7RE-024K	2	49" x 35" x 30-13/64" 51" x 37" x 31"	277 lbs 20 A	Side, Ducted	Side, Ducted	74 dB 15.3 A	35" x 49"	21.8 MBH	11	8	8657774
RPH1430	RQ7RE-030K	2.5	49" x 35" x 30-13/64" 51" x 37" x 31"	281 lbs 25 A	Side, Ducted	Side, Ducted	74 dB 17.3 A	35" x 49"	27.4 MBH	11	8	8657777
RPH1436	RQ7RE-036K	3	49" x 35" x 30-13/64" 51" x 37" x 31"	277 lbs 45 A	Side, Ducted	Side, Ducted	74 dB 28.2 A	35" x 49"	34.8 MBH	11	8	8657778
RPH1442	RQ7RE-042K	3.5	49" x 35" x 30-13/64" 51" x 37" x 31"	288 lbs 50 A	Side, Ducted	Side, Ducted	76 dB 31.9 A	35" x 49"	39 MBH	11	8	8657775
RPH1448	RQ7RE-048KA	4	63" x 35" x 38-13/64" 65" x 37" x 39"	346 lbs 60 A	Side, Ducted	Side, Ducted	79 dB 37.3 A	35" x 63"	46 MBH	11	8	207658465
RPH1460	RQ7RE-060K	5	63" x 35" x 38-13/64" 65" x 37" x 39"	375 lbs 60 A	Side, Ducted	Side, Ducted	79 dB 42.2 A	35" x 63"	56 MBH	11	8	8657779

1) Refer to AHRI listings for actual capacities and performance data.

Note: Electrical data for unit-only, which does not include any field-installed electric heater additions.

800.945.4440

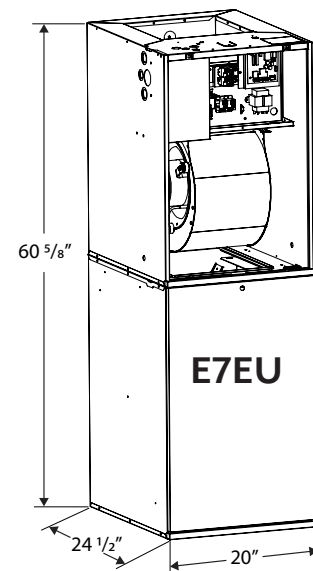
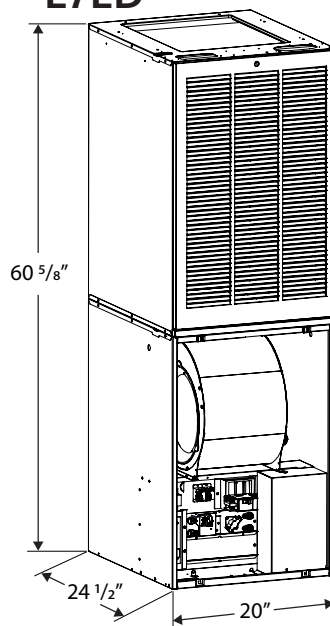
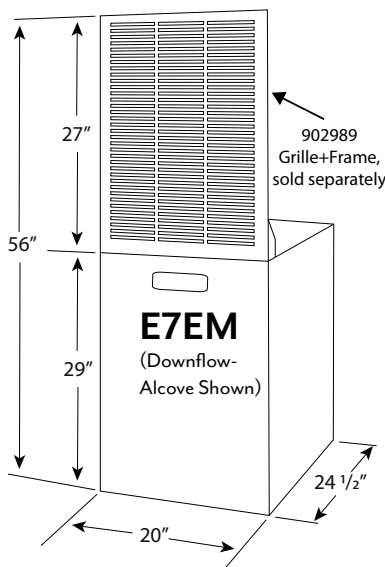
E7 100% AFUE MH Electric Furnaces



- **Unique Manufactured Housing Design** with a robust, 20"W, fully-insulated cabinet to fit the classic MH footprint for replacement opportunities; the E7EM is our most versatile, HUD-compliant, electric furnace.
- **AC-Ready 4-Ton ECM Blower** (5-Ton upgrade available) with 16 dip-switch speed settings, and a factory or field-installed 31-1/2"H coil box to support increasing coil sizes, necessary to reach higher capacities and DOE minimum-efficiencies.
- **Modern Controls** include quiet heater relays and a printed circuit board that eliminates the need for an additional (central air) time delay relay.
- **Numerous Application Accessories** save the hassle of field-fabrication, sourcing and repeat supply-house trips; on new or replacement jobs.
- **Dependable Warranty and Support**, handled directly by Style Crest's dedicated HVAC Team, offering the most competitive warranty coverage and service in the Manufactured Housing Industry.



E7ED

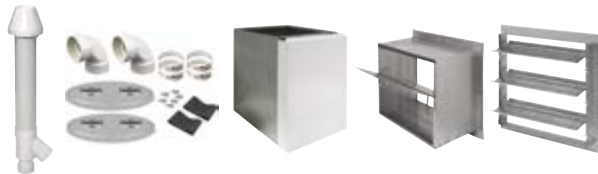


Part No.	Model No.	D x W x H Package; D x W x H	Pkg. Weight	Coil Box	Airflow	Supply	Return	MOP	MCA	Rated Heating Output	Blower Specifications
E7ED-010	E7ED-010H2	24-1/2" x 20" x 60-5/8" 26-1/2" x 21" x 62"	112 lbs	3I-1/2"H	Downflow	Bottom, Ducted	Front, Open (Ducted Top Optional)	60 A	57 A	10.0 kW, 35 MBH @240V	ECM, 1/2hp, 16spd, 4T
E7ED-012	E7ED-012H2	24-1/2" x 20" x 60-5/8" 26-1/2" x 21" x 62"	112 lbs	3I-1/2"H	Downflow	Bottom, Ducted	Front, Open (Ducted Top Optional)	70 A	65 A	11.6 kW, 41 MBH @240V	ECM, 1/2hp, 16spd, 4T
E7ED-015	E7ED-015H2	24-1/2" x 20" x 60-5/8" 26-1/2" x 21" x 62"	112 lbs	3I-1/2"H	Downflow	Bottom, Ducted	Front, Open (Ducted Top Optional)	90 A	83 A	15.0 kW, 53 MBH @240V	ECM, 1/2hp, 16spd, 4T
E7ED-017	E7ED-017H2	24-1/2" x 20" x 60-5/8" 26-1/2" x 21" x 62"	112 lbs	3I-1/2"H	Downflow	Bottom, Ducted	Front, Open (Ducted Top Optional)	90 A	89 A	16.2kW, 57 MBH @240V	ECM, 1/2hp, 16spd, 4T
E7ED-020	E7ED-020H2	24-1/2" x 20" x 60-5/8" 26-1/2" x 21" x 62"	112 lbs	3I-1/2"H	Downflow	Bottom, Ducted	Front, Open (Ducted Top Optional)	110 A	109 A	20.0 kW, 70 MBH @240V	ECM, 1/2hp, 16spd, 4T
E7ED-023	E7ED-023H2	24-1/2" x 20" x 60-5/8" 26-1/2" x 21" x 62"	112 lbs	3I-1/2"H	Downflow	Bottom, Ducted	Front, Open (Ducted Top Optional)	125 A	117 A	21.6 kW, 75 MBH @240V	ECM, 1/2hp, 16spd, 4T
E7EU-010	E7EU-010H2	24-1/2" x 20" x 60-5/8" 26-1/2" x 21" x 62"	112 lbs	3I-1/2"H	Upflow	Top, Ducted	Bottom, Ducted	60 A	57 A	10.0 kW, 35 MBH @240V	ECM, 1/2hp, 16spd, 4T
E7EU-012	E7EU-012H2	24-1/2" x 20" x 60-5/8" 26-1/2" x 21" x 62"	112 lbs	3I-1/2"H	Upflow	Top, Ducted	Bottom, Ducted	70 A	65 A	11.6 kW, 41 MBH @240V	ECM, 1/2hp, 16spd, 4T
E7EU-015	E7EU-015H2	24-1/2" x 20" x 60-5/8" 26-1/2" x 21" x 62"	112 lbs	3I-1/2"H	Upflow	Top, Ducted	Bottom, Ducted	90 A	83 A	15.0 kW, 53 MBH @240V	ECM, 1/2hp, 16spd, 4T
E7EU-017	E7EU-017H2	24-1/2" x 20" x 60-5/8" 26-1/2" x 21" x 62"	112 lbs	3I-1/2"H	Upflow	Top, Ducted	Bottom, Ducted	90 A	89 A	16.2kW, 57 MBH @240V	ECM, 1/2hp, 16spd, 4T
E7EU-020	E7EU-020H2	24-1/2" x 20" x 60-5/8" 26-1/2" x 21" x 62"	112 lbs	3I-1/2"H	Upflow	Top, Ducted	Bottom, Ducted	110 A	109 A	20.0 kW, 70 MBH @240V	ECM, 1/2hp, 16spd, 4T
E7EU-023	E7EU-023H2	24-1/2" x 20" x 60-5/8" 26-1/2" x 21" x 62"	112 lbs	3I-1/2"H	Upflow	Top, Ducted	Bottom, Ducted	125 A	117 A	21.6 kW, 75 MBH @240V	ECM, 1/2hp, 16spd, 4T
E7EM-010	E7EM-010H2	24-1/2" x 20" x 29" 26-1/2" x 21" x 30"	75 lbs	None ¹	Multipoise - Up/ Downflow	Field-Configured		60 A	57 A	10.0 kW, 35 MBH @240V	ECM, 1/2hp, 16spd, 4T
E7EM-012	E7EM-012H2	24-1/2" x 20" x 29" 26-1/2" x 21" x 30"	75 lbs	None ¹	Multipoise - Up/ Downflow	Field-Configured		70 A	65 A	11.6 kW, 41 MBH @240V	ECM, 1/2hp, 16spd, 4T
E7EM-015	E7EM-015H2	24-1/2" x 20" x 29" 26-1/2" x 21" x 30"	75 lbs	None ¹	Multipoise - Up/ Downflow	Field-Configured		90 A	83 A	15.0 kW, 53 MBH @240V	ECM, 1/2hp, 16spd, 4T
E7EM-017	E7EM-017H2	24-1/2" x 20" x 29" 26-1/2" x 21" x 30"	75 lbs	None ¹	Multipoise - Up/ Downflow	Field-Configured		90 A	89 A	16.2kW, 57 MBH @240V	ECM, 1/2hp, 16spd, 4T
E7EM-020	E7EM-020H2	24-1/2" x 20" x 29" 26-1/2" x 21" x 30"	75 lbs	None ¹	Multipoise - Up/ Downflow	Field-Configured		110 A	109 A	20.0 kW, 70 MBH @240V	ECM, 1/2hp, 16spd, 4T
E7EM-023	E7EM-023H2	24-1/2" x 20" x 29" 26-1/2" x 21" x 30"	75 lbs	None ¹	Multipoise - Up/ Downflow	Field-Configured		125 A	117 A	21.6 kW, 75 MBH @240V	ECM, 1/2hp, 16spd, 4T

1) If adding a central air split system, you should also order a separate field-installed coil box, listed with the Furnace Accessories products.

Note: MCA and MOP for single circuiting, consult product specifications for dual circuiting.

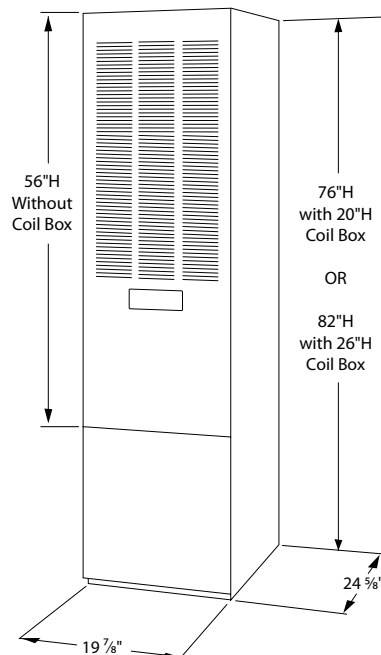
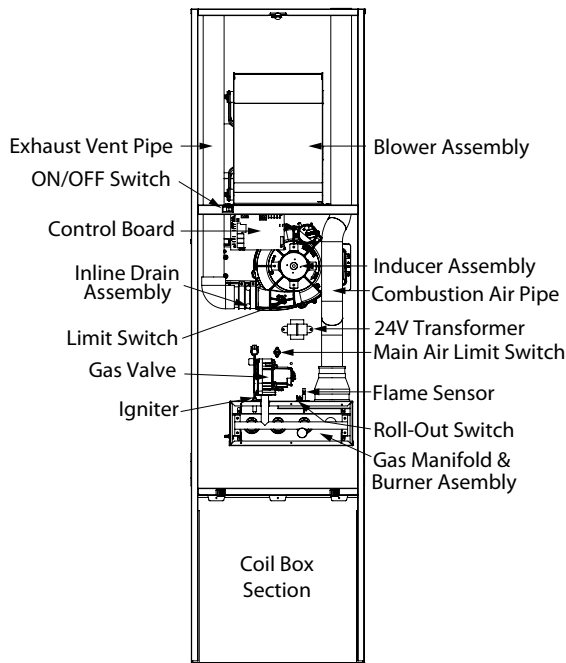
MG2R 95% AFUE High-Efficiency MH Gas Furnaces



- **Unique Manufactured Housing Design** with a robust, 19-7/8"W, fully-insulated cabinet to fit the standard MH footprint; the MG2R is our flagship high-efficiency, HUD-compliant, gas furnace.
- **AC-Ready 4-Ton ECM Blower** with 5-speed taps, with/without a factory-installed 20"H coil box; allowing for a field-installed 20"/26"H coil box to suit your capacity and access needs. (See Split System section for AHRI-rated coil-fit matches.)
- **Quick LP Conversion** with an easy-access gas valve regulator and manifold, using the factory-provided LP orifices included in the unit-literature kit.
- **Category IV Venting Approval** allows for vertical or horizontal direct venting using an approved non-metallic two-pipe system for application flexibility.
- **Dependable Warranty and Support**, handled directly by Style Crest's dedicated HVAC Team, offering the most competitive warranty coverage and service in the Manufactured Housing Industry.

This furnace does not meet the SCAQMD Rule 1111 NO_x emission limit (14 ng/J), and is subject to a mitigation fee of up to \$450.

This furnace is not eligible for the Clean Air Furnace Rebate Program: www.CleanAirFurnaceRebate.com.



Part No.	Model No.	D x W x H <i>Package; D x W x H</i>	Pkg. Weight	Coil Box	Airflow	Supply	Return	Rated Heating Input <i>Output</i>	Orifice ² NG LP	Orifice Qty.	Blower Specifications	AHRI Certificate Number
MG2R-045FA	MG2R-045FIAAM2	24-5/8" x 19-7/8" x 56" 26-1/2" x 21-5/16" x 58-1/8"	150 lbs	None ¹	Downflow	Bottom, Ducted	Front, Open	45 MBH 43 MBH	49 57	3	ECM, 3/4hp, 5spd, 4T	204600301
MG2R-060FA	MG2R-060FIAAM2	24-5/8" x 19-7/8" x 56" 26-1/2" x 21-5/16" x 58-1/8"	150 lbs	None ¹	Downflow	Bottom, Ducted	Front, Open	60 MBH 57 MBH	45 55	3	ECM, 3/4hp, 5spd, 4T	204600302
MG2R-072FA	MG2R-072FIAAM2	24-5/8" x 19-7/8" x 56" 26-1/2" x 21-5/16" x 58-1/8"	155 lbs	None ¹	Downflow	Bottom, Ducted	Front, Open	72 MBH 68 MBH	47 56	4	ECM, 3/4hp, 5spd, 4T	204600303
MG2R-045FB	MG2R-045FIABM2	24-5/8" x 19-7/8" x 76" 26-1/2" x 21-5/16" x 78-1/8"	170 lbs	20"H	Downflow	Bottom, Ducted	Front, Open	45 MBH 43 MBH	49 57	3	ECM, 3/4hp, 5spd, 4T	204600301
MG2R-060FB	MG2R-060FIABM2	24-5/8" x 19-7/8" x 76" 26-1/2" x 21-5/16" x 78-1/8"	170 lbs	20"H	Downflow	Bottom, Ducted	Front, Open	60 MBH 57 MBH	45 55	3	ECM, 3/4hp, 5spd, 4T	204600302
MG2R-072FB	MG2R-072FIABM2	24-5/8" x 19-7/8" x 76" 26-1/2" x 21-5/16" x 78-1/8"	175 lbs	20"H	Downflow	Bottom, Ducted	Front, Open	72 MBH 68 MBH	47 56	4	ECM, 3/4hp, 5spd, 4T	204600303
MG2R-045TA ³	MG2R-045TIAAM2	24-5/8" x 19-7/8" x 56" 26-1/2" x 21-5/16" x 58-1/8"	150 lbs	None ¹	Downflow	Bottom, Ducted	Top, Ducted	45 MBH 43 MBH	49 57	3	ECM, 3/4hp, 5spd, 4T	204600304
MG2R-060TA ³	MG2R-060TIAAM2	24-5/8" x 19-7/8" x 56" 26-1/2" x 21-5/16" x 58-1/8"	150 lbs	None ¹	Downflow	Bottom, Ducted	Top, Ducted	60 MBH 57 MBH	45 55	3	ECM, 3/4hp, 5spd, 4T	204600305
MG2R-072TA ³	MG2R-072TIAAM2	24-5/8" x 19-7/8" x 56" 26-1/2" x 21-5/16" x 58-1/8"	155 lbs	None ¹	Downflow	Bottom, Ducted	Top, Ducted	72 MBH 68 MBH	47 56	4	ECM, 3/4hp, 5spd, 4T	204600306
MG2R-045TB ³	MG2R-045TIABM2	24-5/8" x 19-7/8" x 76" 26-1/2" x 21-5/16" x 78-1/8"	170 lbs	20"H	Downflow	Bottom, Ducted	Top, Ducted	45 MBH 43 MBH	49 57	3	ECM, 3/4hp, 5spd, 4T	204600304
MG2R-060TB ³	MG2R-060TIABM2	24-5/8" x 19-7/8" x 76" 26-1/2" x 21-5/16" x 78-1/8"	170 lbs	20"H	Downflow	Bottom, Ducted	Top, Ducted	60 MBH 57 MBH	45 55	3	ECM, 3/4hp, 5spd, 4T	204600305
MG2R-072TB ³	MG2R-072TIABM2	24-5/8" x 19-7/8" x 76" 26-1/2" x 21-5/16" x 78-1/8"	175 lbs	20"H	Downflow	Bottom, Ducted	Top, Ducted	72 MBH 68 MBH	47 56	4	ECM, 3/4hp, 5spd, 4T	204600306

1) If adding a central air split system, you must also order a separate field-installed coil box, listed with the Furnace Accessories products.

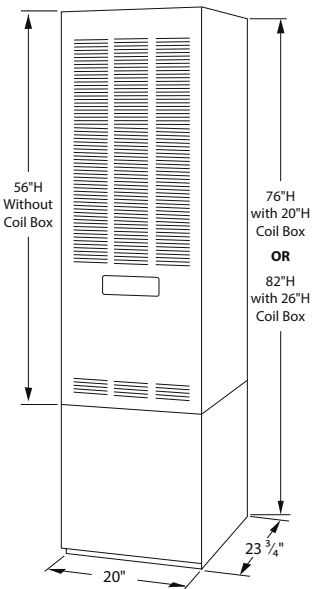
2) Orifice will vary with altitude; consult the unit installation instructions for correct orifice selection for your application and altitude.

3) These items are available as drop-ship only (not stocked), where a non-cancellable order minimum and longer lead-time may apply.

MGIE 80% AFUE MH Gas Furnaces



- **Unique Manufactured Housing Design** with a robust, 20"W, fully-insulated cabinet to fit the standard MH footprint; the MGIE is our most economical, HUD-compliant, gas furnace.
- **AC-Ready 4-Ton ECM Blower** with 5-speed taps, with/without a factory-installed 20"H coil box; allowing for a field-installed 20"/26"H coil box to suit your capacity and access needs. (See Split System section for AHRI-rated coil-fit matches.)
- **Quick LP Conversion** with an easy-access gas valve regulator and manifold assembly; using the factory-supplied LP orifice, included with the unit.
- **Numerous Application Accessories** save the hassle of field-fabrication, sourcing and repeat supply-house trips; on new or replacement jobs.
- **Dependable Warranty and Support**, handled directly by Style Crest's dedicated HVAC Team, offering the most competitive warranty coverage and service in the Manufactured Housing Industry.



This furnace does not meet the SCAQMD Rule IIII NOx emission limit (14 ng/j), and is subject to a mitigation fee of up to \$450. This furnace is not eligible for the Clean Air Furnace Rebate Program: www.CleanAirFurnaceRebate.com.

Part No.	Model No.	Nominal Tons	D x W x H Package; D x W x H	Pkg. Weight	Coil Box	Airflow	Supply	Return	Rated Heating Input Output	Orifice ² NG LP	Orifice Qty.	Blower Specifications	AHRI Certificate Number
MGIE-056A	MGIE-056FIAAM2	4	23-3/4" x 19-3/4" x 56" 26-1/2" x 21-5/16" x 58-1/8"	157 lbs	None ¹	Downflow	Bottom, Ducted	Front, Open	56 MBH 45 MBH	29 45	1	ECM, 3/4hp, 5spd, 4T	207643534
MGIE-070A	MGIE-070FIAAM2	4	23-3/4" x 19-3/4" x 56" 26-1/2" x 21-5/16" x 58-1/8"	157 lbs	None ¹	Downflow	Bottom, Ducted	Front, Open	70 MBH 57 MBH	24 42	1	ECM, 3/4hp, 5spd, 4T	207643535
MGIE-077A	MGIE-077FIAAM2	4	23-3/4" x 19-3/4" x 56" 26-1/2" x 21-5/16" x 58-1/8"	157 lbs	None ¹	Downflow	Bottom, Ducted	Front, Open	77 MBH 62 MBH	21 40	1	ECM, 3/4hp, 5spd, 4T	207643536
MGIE-090A	MGIE-090FIAAM2	4	23-3/4" x 19-3/4" x 56" 26-1/2" x 21-5/16" x 58-1/8"	157 lbs	None ¹	Downflow	Bottom, Ducted	Front, Open	85 MBH 67 MBH	17 36	1	ECM, 3/4hp, 5spd, 4T	207643537
MGIE-056B	MGIE-056FIABM2	4	23-3/4" x 19-3/4" x 76" 26-1/2" x 21-5/16" x 78-1/8"	171 lbs	20"H	Downflow	Bottom, Ducted	Front, Open	56 MBH 45 MBH	29 45	1	ECM, 3/4hp, 5spd, 4T	207643534
MGIE-070B	MGIE-070FIABM2	4	23-3/4" x 19-3/4" x 76" 26-1/2" x 21-5/16" x 78-1/8"	171 lbs	20"H	Downflow	Bottom, Ducted	Front, Open	70 MBH 57 MBH	24 42	1	ECM, 3/4hp, 5spd, 4T	207643535
MGIE-077B	MGIE-077FIABM2	4	23-3/4" x 19-3/4" x 76" 26-1/2" x 21-5/16" x 78-1/8"	171 lbs	20"H	Downflow	Bottom, Ducted	Front, Open	77 MBH 62 MBH	21 40	1	ECM, 3/4hp, 5spd, 4T	207643536
MGIE-090B	MGIE-090FIABM2	4	23-3/4" x 19-3/4" x 76" 26-1/2" x 21-5/16" x 78-1/8"	171 lbs	20"H	Downflow	Bottom, Ducted	Front, Open	85 MBH 67 MBH	17 36	1	ECM, 3/4hp, 5spd, 4T	207643537

1) If adding a central air split system, you must also order a separate field-installed coil box, listed with the Furnace Accessories products.

2) Orifice will vary with altitude; consult the unit installation instructions for correct orifice selection for your application and altitude.

VMC2/VMA4 95% AFUE Premium MH Gas Furnaces



- **Unique Manufactured Housing Design** with a robust, fully-insulated cabinet that accommodates the standard MH footprint; the highest-quality, HUD-compliant, gas furnaces available.
- **Energy Star Certified Models** have a constant torque ECM blower with a factory-installed 26-1/8"H coil box (VMC) for up to 4-Tons nominal cooling (~3-1/2T on 50MBH models). See Split System section for AHRI matches and coil fit.
- **Superior-Durability Construction** exemplified by 18-gauge, aluminum-coated primary and 24C stainless-steel, secondary heat exchangers — both backed by a limited LIFETIME warranty.
- **Numerous Application Accessories** save the hassle of field-fabrication, sourcing and repeat supply-house trips; on new or replacement jobs.
- **Dependable Warranty and Support**, with the most competitive warranty coverage & service in the MH Industry; handled directly by Style Crest's dedicated HVAC Team.

VM furnaces CANNOT be INSTALLED anywhere in the state of California.*

Part No.	Model No.	D x W x H Package; D x W x H	Pkg. Weight	Coil Box	Airflow	Supply	Return	Rated Heating Input Output	Orifice ³ NG LP2	Blower Specifications	AHRI Certificate Number
VMA4-50D36N	VMA4-50D36N	25-3/4" x 18" x 57" 27" x 21" x 63-1/2"	185 lbs	None ¹	Downflow	Bottom, Ducted	Front, Open	50 MBH 48 MBH	42 54	PSC, 1/2hp, 4spd	205000517
VMA4-75D36N	VMA4-75D36N	25-3/4" x 18" x 57" 27" x 21" x 63-1/2"	185 lbs	None ¹	Downflow	Bottom, Ducted	Front, Open	75 MBH 72 MBH	42 54	PSC, 1/2hp, 4spd	205000518
VMC2-50D36N	VMC2-50D36N	25-3/4" x 18-3/4" x 76-1/8" 27" x 21" x 82"	220 lbs	26-1/8"H ²	Downflow	Bottom, Ducted	Front, Open	50 MBH 48 MBH	42 54	PSC, 1/2hp, 4spd	205000519
VMC2-75D36N	VMC2-75D36N	25-3/4" x 18-3/4" x 76-1/8" 27" x 21" x 82"	220 lbs	26-1/8"H ²	Downflow	Bottom, Ducted	Front, Open	75 MBH 72 MBH	42 54	PSC, 1/2hp, 4spd	205000520
VMC2-50DV3N ★	VMC2-50DV3N	25-3/4" x 18-3/4" x 76-1/8" 27" x 21" x 82"	220 lbs	26-1/8"H ²	Downflow	Bottom, Ducted	Front, Open	50 MBH 48 MBH	42 54	ECM, 1/2hp, 5spd	205013564
VMC2-75DV3N ★	VMC2-75DV3N	25-3/4" x 18-3/4" x 76-1/8" 27" x 21" x 82"	220 lbs	26-1/8"H ²	Downflow	Bottom, Ducted	Front, Open	75 MBH 72 MBH	42 54	ECM, 1/2hp, 5spd	205013565

1) If adding a central air split system, you should also order the separate field-installed coil box, listed with the Furnace Accessories products.

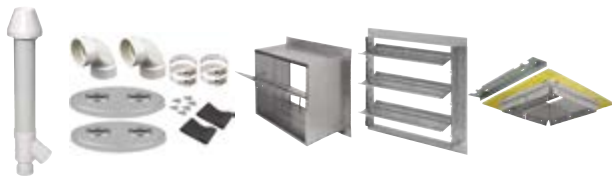
2) The nominal opening-height through which an indoor coil can be installed is 24-3/4".

3) Orifice will vary with altitude; consult the unit installation instructions for correct orifice selection for your application and altitude.

★ Energy Star Rated.



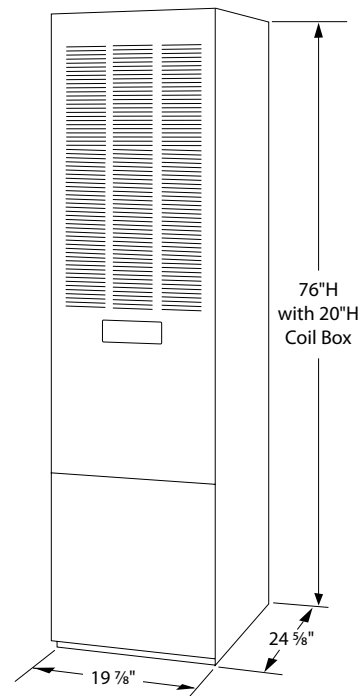
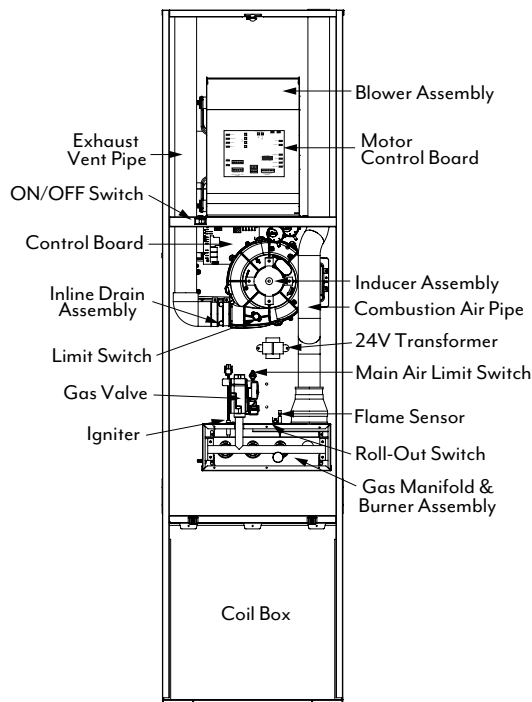
MG2S 96% AFUE 2-Stage MH Gas Furnaces



- **Unique Manufactured Housing Design** with a robust, 19-7/8"W, fully-insulated cabinet to fit the standard MH footprint; the highest-efficiency, HUD-compliant, gas furnace on the market.
- **2-Stage Gas Valve** allows for true, low-fire furnace operation to produce as little as half of the rated full-capacity, preventing short cycling in smaller spaces and reducing energy consumption.
- **AC-Ready Options** include a factory-installed 20"H coil box and an FER-compliant ECM blower with 16 dip-switch speed-settings, for up to 4-Tons nominal cooling. (See Split System section for coil fit and AHRI-matches.)
- **Simple LP Conversion** with an easy-access gas valve regulator and manifold assembly; LP components are factory-supplied with the unit.
- **Dependable Warranty and Support**, handled directly by Style Crest's dedicated HVAC Team, offering the most competitive warranty coverage and service in the Manufactured Housing Industry.

This furnace does not meet the SCAQMD Rule 1111 NO_x emission limit (14 ng/l), and is subject to a mitigation fee of up to \$450.

This furnace is not eligible for the Clean Air Furnace Rebate Program: www.CleanAirFurnaceRebate.com.



Part No.	Model No.	D x W x H	Pkg. Weight	Coil Box	Airflow	Supply	Return	Rated Heating Input	Low-fire Input	Blower Specifications	AHRI Certificate Number
		Package: D x W x H						Output	Low-fire Output		
MG2S-045F	MG2S-045F2ABM2	24-5/8" x 19-7/8" x 76" 26-1/2" x 21-1/2" x 78"	179 lbs	20"H	Downflow	Bottom, Ducted	Front, Open	45 MBH 43.2 MBH	29 MBH 27.8 MBH	ECM, 3/4hp, 16spd, 4T	203049789
MG2S-060F	MG2S-060F2ABM2	24-5/8" x 19-7/8" x 76" 26-1/2" x 21-1/2" x 78"	179 lbs	20"H	Downflow	Bottom, Ducted	Front, Open	60 MBH 57.6 MBH	39 MBH 37.4 MBH	ECM, 3/4hp, 16spd, 4T	203049796
MG2S-072F	MG2S-072F2ABM2	24-5/8" x 19-7/8" x 76" 26-1/2" x 21-1/2" x 78"	186 lbs	20"H	Downflow	Bottom, Ducted	Front, Open	72 MBH 69.1 MBH	47 MBH 45.1 MBH	ECM, 3/4hp, 16spd, 4T	203049801
MG2S-045T ¹	MG2S-045T2ABM2	24-5/8" x 19-7/8" x 76" 26-1/2" x 21-1/2" x 78"	179 lbs	20"H	Downflow	Bottom, Ducted	Top, Ducted	45 MBH 43.2 MBH	29 MBH 27.8 MBH	ECM, 3/4hp, 16spd, 4T	203049794
MG2S-060T ¹	MG2S-060T2ABM2	24-5/8" x 19-7/8" x 76" 26-1/2" x 21-1/2" x 78"	179 lbs	20"H	Downflow	Bottom, Ducted	Top, Ducted	60 MBH 57.6 MBH	39 MBH 37.4 MBH	ECM, 3/4hp, 16spd, 4T	203049799
MG2S-072T ¹	MG2S-072T2ABM2	24-5/8" x 19-7/8" x 76" 26-1/2" x 21-1/2" x 78"	186 lbs	20"H	Downflow	Bottom, Ducted	Top, Ducted	72 MBH 69.1 MBH	47 MBH 45.1 MBH	ECM, 3/4hp, 16spd, 4T	203049803

1) These items are available as drop-ship only (not stocked), where a non-cancellable order minimum and longer lead-time may apply.

MG3P 92.1% AFUE Multi-Use Gas Furnaces



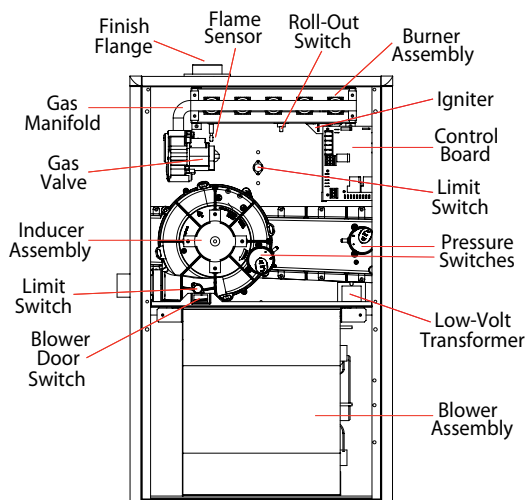
- **MH and Residential Compliance** that covers both modular housing built to the latest building codes and conventional HUD manufactured homes, available in 3-standard residential footprints.
- **Constant Torque ECM Blower** for up to 4-Tons nominal cooling, with field-installed cased coil options. (See AHRI Certified Products Directory for "C7" coil matches with Revolv condensers.)
- **Simple LP Conversion** with an easy-access gas valve regulator and factory-provided LP orifices included with every unit.
- **Category IV Venting Approval** allows for vertical or horizontal direct venting using an approved non-metallic two-pipe system for application flexibility.
- **Dependable Warranty and Support**, handled directly by Style Crest's dedicated HVAC Team, offering the most competitive warranty coverage and service, in the Manufactured Housing Industry.

This furnace does not meet the SCAQMD Rule 1111 NOx emission limit (14 ng/J), and is subject to a mitigation fee of up to \$450. This furnace is not eligible for the Clean Air Furnace Rebate Program: www.CleanAirFurnaceRebate.com.

Part No.	Model No.	D x W x H	Pkg. Weight	Coil Box	Airflow	Supply	Return	Rated Heating	Orifice ²	Orifice Qty.	Blower Specifications	AHRI Certificate Number
		Package; D x W x H						Input Output	NG LP			
MG3P-054B	MG3P-054UIAABP	28" x 17-1/2" x 34-1/2" 30-11/16" x 20-5/16" x 36-1/8"	120 lbs	None	Upflow ¹	Top, Ducted	Bottom, Ducted	54 MBH 50 MBH	47 56	3	ECM, 3/4hp, 5spd	205281365
MG3P-072C	MG3P-072UIACP	28" x 21" x 34-1/2" 30-11/16" x 24" x 36-1/8"	130 lbs	None	Upflow ¹	Top, Ducted	Bottom, Ducted	72 MBH 66 MBH	47 56	4	ECM, 3/4hp, 5spd	205281369
MG3P-090C	MG3P-090UIACP	28" x 21" x 34-1/2" 30-11/16" x 24" x 36-1/8"	135 lbs	None	Upflow ¹	Top, Ducted	Bottom, Ducted	90 MBH 83 MBH	47 56	5	ECM, 1hp, 5spd	205281367
MG3P-108D	MG3P-108UIADP	28" x 24-1/2" x 34-1/2" 30-11/16" x 27-5/16" x 36-1/8"	155 lbs	None	Upflow ¹	Top, Ducted	Bottom, Ducted	108 MBH 99 MBH	47 56	6	ECM, 1hp, 5spd	205281371

1) Contact Style Crest Sales if a central air split system addition is desired; utilizing a separate field-installed coil, coil box, and condenser.

2) Orifice sizing will vary with altitude; consult the unit installation instructions for correct orifice selection for your application and altitude.



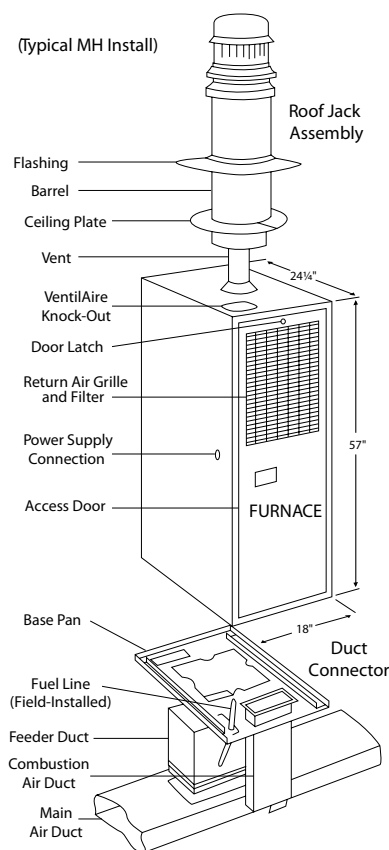
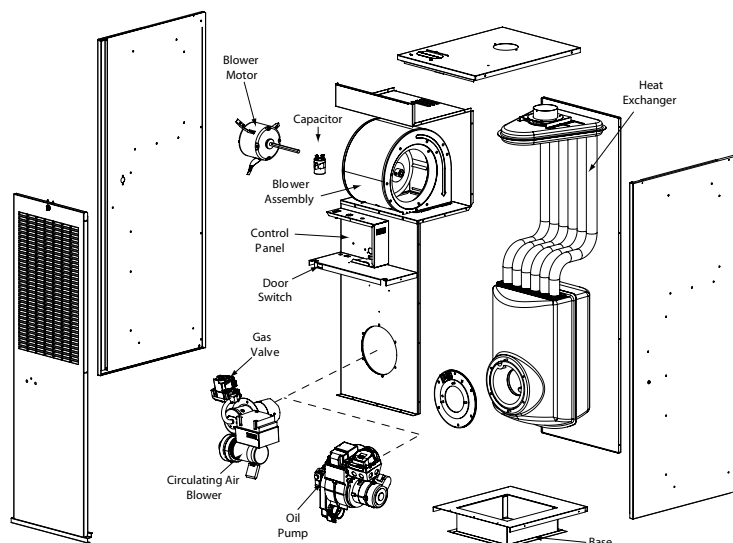
C7BH Cased Coil - Sold Separately

CMF3 80% AFUE Replacement MH Gas Furnace



- **18" Wide Cabinet** to accommodate tight replacement jobs, often found in the oldest Manufactured Homes.
- **Several Application Accessories** allow for convenient adaptation to an original installation, saving field-fabrication time.
- **5-speed Constant Torque ECM Blower** provides efficient, quiet and comfortable operation with resized fan switches, eliminating nuisance cycling.
- **Tilt-Out Door** with more louvers for improved airflow, a standard 25"x16"x1" disposable filter, and a plunger-style switch for ease of service.
- **Dependable Warranty and Support**, handled directly by Style Crest's dedicated HVAC Team, offering the most competitive warranty coverage and service in the Manufactured Housing Industry.

CMF furnaces CANNOT be INSTALLED anywhere in the state of California.



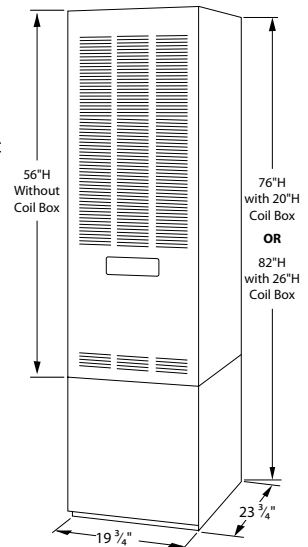
Part No.	Model No.	D x W x H	Pkg. Weight	Airflow	Supply	Return	Rated Heating Input	Orifice ¹	Blower Specifications	AHRI Certificate Number
		Package; D x W x H	MOP					NG LP		
CMF3-70-G	CMF3-70T-PGP	24-1/4" x 18" x 57"	163 lbs	Downflow	Bottom, Ducted	Front, Open	70 MBH	22	ECM, 1/2hp, 5spd	207708924
		26" x 20" x 61"	15 A				56 MBH	41		

1) Orifice sizing varies with altitude and firing rate; consult the installation instructions for correct orifice selection for your altitude and application.
NOTE: No split system option, must use a packaged unit for air conditioning.

M5SB 83% AFUE MH Oil Furnaces



- **Unique Manufactured Housing Design** with a robust, 19-3/4"W, fully-insulated cabinet to fit the standard MH footprint; the M5SB is our contemporary HUD-compliant, oil furnace.
- **AC-Ready Options** include a factory-installed 20"H coil box, field-installed 20"H/26"H coil box, and PSC blower upgrades for up to 5-Tons nominal cooling. (See Split System section for coil fit and AHRI-rated matches.)
- **High-Performance Combustion System** including a Beckett burner and drum heat exchanger, which contribute to the overall efficiency, reliability, and homeowner's peace of mind.
- **Numerous Application Accessories** save the hassle of field-fabrication, sourcing and repeat supply-house trips; on new or replacement jobs.
- **Dependable Warranty and Support**, handled directly by Style Crest's dedicated HVAC Team, offering the most competitive warranty coverage and service in the Manufactured Housing Industry.



Part No.	D x W x H <i>Package: D x W x H</i>	Pkg. Weight <i>MOP</i>	Coil Box	Airflow	Supply	Return	Rated Heating Input <i>Output</i>	Burner Nozzle	Blower Specifications	AHRI Certificate Number
M5SB-066A-AW	23-3/4" x 19-3/4" x 56" 26-1/2" x 21-5/16" x 58-1/8"	151 lbs 15 A	None ¹	Downflow	Bottom, Ducted	Front, Open	66 MBH 56 MBH	.50 Gph, 80°A	PSC, 1/4hp, 3spd, 3T	201928967
M5SB-086A-AW	23-3/4" x 19-3/4" x 56" 26-1/2" x 21-5/16" x 58-1/8"	158 lbs 15 A	None ¹	Downflow	Bottom, Ducted	Front, Open	86 MBH 72 MBH	.65 Gph, 80°A	PSC, 1/4hp, 3spd, 3T	201928968
M5SB-066A-BW	23-3/4" x 19-3/4" x 76" 26-1/2" x 21-5/16" x 78-1/8"	165 lbs 15 A	20"H	Downflow	Bottom, Ducted	Front, Open	66 MBH 56 MBH	.50 Gph, 80°A	PSC, 1/4hp, 3spd, 3T	201928967
M5SB-086A-BW	23-3/4" x 19-3/4" x 76" 26-1/2" x 21-5/16" x 78-1/8"	173 lbs 15 A	20"H	Downflow	Bottom, Ducted	Front, Open	86 MBH 72 MBH	.65 Gph, 80°A	PSC, 1/4hp, 3spd, 3T	201928968

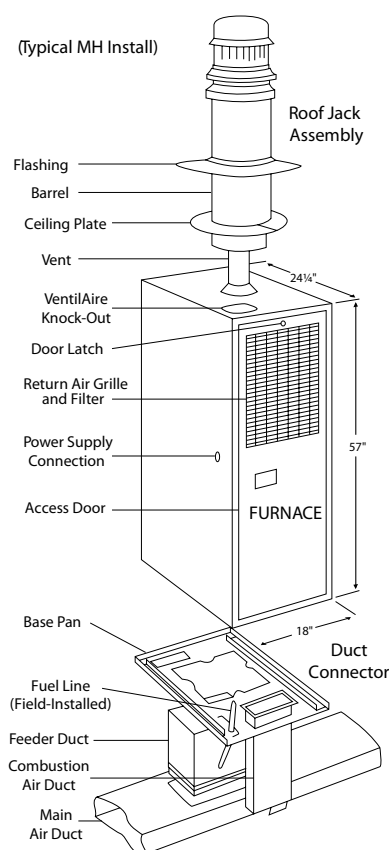
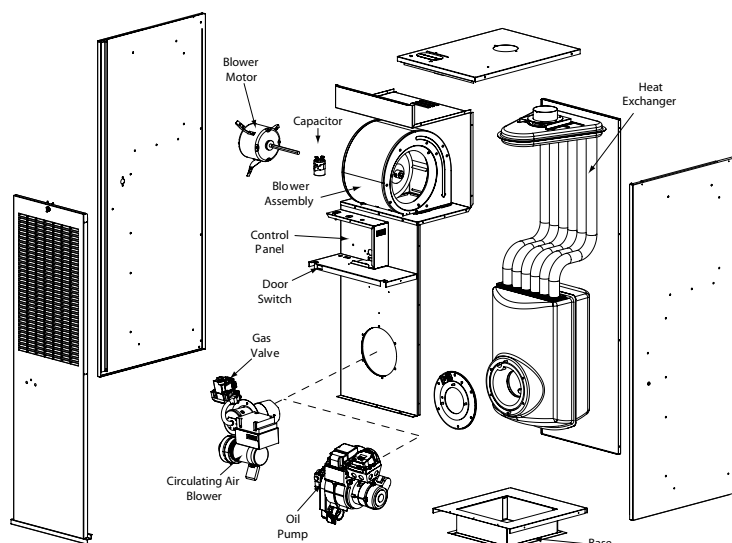
1) If adding a central air split system, you must also order a separate field-installed coil box, listed with the Furnace Accessories products.

CMF2 80% AFUE Replacement MH Oil Furnace



- **18" Wide Cabinet** to accommodate tight replacement jobs, often found in the oldest Manufactured Homes.
- **Several Application Accessories** allow for convenient adaptation to an original installation, saving field-fabrication time.
- **3-speed PSC Blower** provides efficient, quiet and comfortable operation with resized auxiliary limit switch to eliminate nuisance cycling. A packaged unit is recommended for air conditioning.
- **High-quality Beckett Oil Burners** are factory installed for extended service-life.
- **Dependable Warranty and Support**, handled directly by Style Crest's dedicated HVAC Team, offering the most competitive warranty coverage and service in the Manufactured Housing Industry.

CMF furnaces CANNOT be INSTALLED anywhere in the state of California.



Part No.	Model No.	D x W x H	Pkg. Weight	Airflow	Supply	Return	Rated Heating	Burner Nozzle	Blower Specifications	AHRI Certificate Number
		Package; D x W x H	MOP				Input Output			
904516	CMF2 80 POP	24-14" x 18" x 57" 26" x 20" x 61"	166 lbs 15 A	Downflow	Bottom, Ducted	Front, Open	75 MBH 60 MBH	.60 Gph, A, 80°	PSC, 1/4hp, 3spd	207525870

NOTE: No split system option, must use a packaged unit for air conditioning.

HVAC Accessories

Ceiling Rings



Part No.	Description	Used With
902521	Adjustable Ceiling Ring-Halves, 2-Pieces (Pair).	M5SB, MG1E

Draft Transition



Part No.	Description	Used With
08560007	3"Ø to 4"Ø Hole Draft Transition. Each.	VMA4, VMC2
08560008	3"Ø to 5"Ø Hole Draft Transition. Each.	

NE Safety Kit

Part No.	Description	Used With
901855	New England Safety Kit (Required in MA). Each.	CMF2, M5SB

Vent Pipes



Part No.	Description	Used With
103947002	28"H Furnace to SRJ# Vent Pipe. Each.	CMF2, CMF3
103947004	34"H Furnace to SRJ# Vent Pipe. Each.	
103947005	40"H Furnace to SRJ# Vent Pipe. Each.	
901697	Offset Vent Pipe. Each.	

Concentric Vent Kits



Part No.	Description	Used With
904953	3"Ø Concentric Vent Pipe Termination Kit, US/CA. Each.	MG2R, MG2S, MG3P
904952	2"Ø Concentric Vent Pipe Termination Kit, US/CA. Each.	MG2R, MG3P
08560002	Concentric Vent Kit with Roof Flashing, VMC/A. Each.	VMA4, VMC2
08560005	Concentric Vent Kit, VMC/A. Each.	

Vent Transition Kit



Part No.	Description	Used With
904106	2-Pipe Vent Transition Kit (old RJ opening). Each.	MG2R, MG2S

Adapter Kit

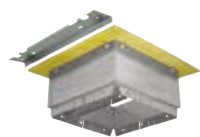


Part No.	Description	Used With
903456	Combustion Air Inlet Adapter Kit. Each.	CMF2, CMF3

This item is available as drop-ship only (not stocked), where a non-cancellable order minimum and longer lead-time may apply.

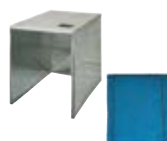
HVAC Accessories

Duct Connectors



Part No.	Description	Used With
901987A	11-1/4" x 13-1/2" x 7/8"H Duct Connector. Each (12/ Carton).	E7, MGIE, MG2R, MG2S, M5SB
901988A	11-1/4" x 13-1/2" x 2"H Duct Connector. Each (12/ Carton).	
901989A	11-1/4" x 13-1/2" x 4-1/4"H Duct Connector. Each (6/ Carton).	
901990A	11-1/4" x 13-1/2" x 6-1/4"H Duct Connector. Each (6/ Carton).	
901991A	11-1/4" x 13-1/2" x 8-1/4"H Duct Connector. Each (4/ Carton).	
901992A	11-1/4" x 13-1/2" x 10-1/4"H Duct Connector. Each (3/ Carton).	
901993A	11-1/4" x 13-1/2" x 12-1/4"H Duct Connector. Each (3/ Carton).	E7EM, E7EU
902990	Upflow Duct Connector. Each.	

Coil Boxes



Part No.	Description	Used With
08560003	20"H Counterflow Coil Box, VMA-Only. Each.	VMA4
1006730	Upflow/Downflow Coil Box with Solid Door, 31-1/2"H. Each.	E7EM
1006731	Downflow Coil Box with Louvered Door, 31-1/2"H (Front Return). Each.	E7EM
903891	Alcove Replacement Downflow Coil Box. Each.	902989, E7EM
911969A	20"H Central Air Coil Box, Field-Installed. Each.	MGIE, MG2R, M5SB
922594	26"H Central Air Coil Box, Field-Installed. Each.	
13010001	E2-E4-KD Coil Box, 24-3/4"D x 20"W x 25"H. Each.	13010002, E7EM

Backflow Dampers



Part No.	Description	Used With
901083	1-Blade Cooling Backflow Damper for Empty Coil Box for Combustion Furnaces when used with Packaged Units. Each.	MGIE, MG2R, MG2S, M5SB
902095	3-Blade Low Profile Cooling Backflow Damper for Combustion Furnaces, used with Packaged Units. Each.	CMF3, MGIE, MG2R, MG2S, M5SB

HVAC Accessories

Upflow Stand



Part No.	Description	Used With
1014501	Upflow Stand with Door. Each.	E7EU, E7EM
281241	Replacement Door-Only. Each.	1014501, E7EU, E7EM

Coil Grilles



Part No.	Description	Used With
902989	27"H Top Grille and Frame (Alcove Coil Application). Each.	903891, E7EM
13010002	20"W x 23"H Coil Grille E2-E4-KD. Each.	13010001, E7EM

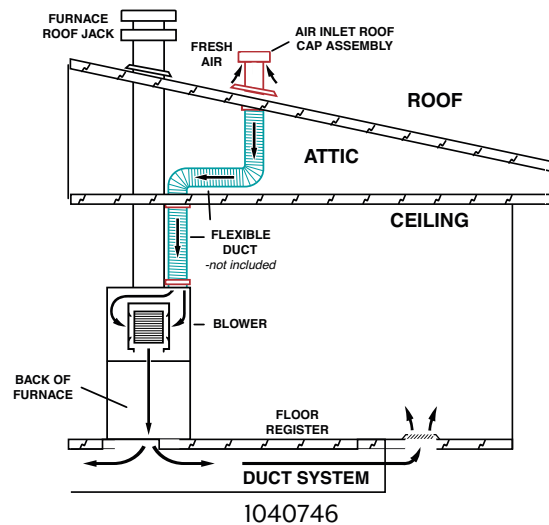
Conversion Kit



Part No.	Description	Used With
903102	Conversion Kit, 90MBH Input, CMF2-Oil. Each.	CMF2
903100	Conversion Kit, 65MBH Input, CMF2-Oil. Each.	

VentilAire™ Kits

Part No.	Description	Used With
1040746	VentilAire™ III Kit, Whole Home Fresh Air, Sloped Roof. Each.	E7, CMF2, CMF3, MG1E, MG2S, MG2R, MG3P
914229B	VentilAire™ IV Kit, Whole Home Fresh Air, Sloped Roof. Each.	
917201A	VentilAire™ III, Soffit Vent System Kit. Each.	



Universal Base Packages



Part No.	Description	Used With
903453	MA-200 Base Package with 8" Feeder Duct. Each.	CMF2, CMF3
903450	MA-100 Universal Base Package with 8" Feeder Duct. Each.	CMF2, CMF3
903451	MA-100 Universal Base Package with 13" Feeder Duct. Each.	

HVAC Accessories

Combustion Base



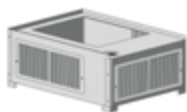
Part No.	Description	Used With
08560001	Combustion Base, Required on VMA-Heat-Only. Each.	VMA4

Condensate Safety Overflow Switch



Part No.	Description
CS-2	Pipe Mounted Condensate Safety Overflow Switch

Cottage Base



Part No.	Description	Used With
901696	CB-200A Cottage Base. Each.	CMF2, CMF3

This item is available as drop-ship only (not stocked), where a non-cancellable order minimum and longer lead-time may apply.

Drain Pan



Part No.	Description
1899911101	Tube-in-Fin 19-5/8"D Drain Pan. Each.

Condensate Trap



Part No.	Description
5015411	3/4" Condensate Drain Line P-Trap. Each.

Blower Upgrade Kits



Part No.	Description	Used With
08250003	ECM Blower Kit - Cooling Application, EB Series (for AHRI matches). Each.	EB
1027059	5-Ton (AC) ECM Blower Upgrade Kit. Each.	E7
903413	4-Ton AC-Blower Upgrade Kit, 4-Speed. Each.	M5SB
903890	5-Ton AC-Blower Upgrade Kit, 4-Speed. Each.	M5SB

HVAC Accessories

Roof Jack Assemblies - MG1/M5S



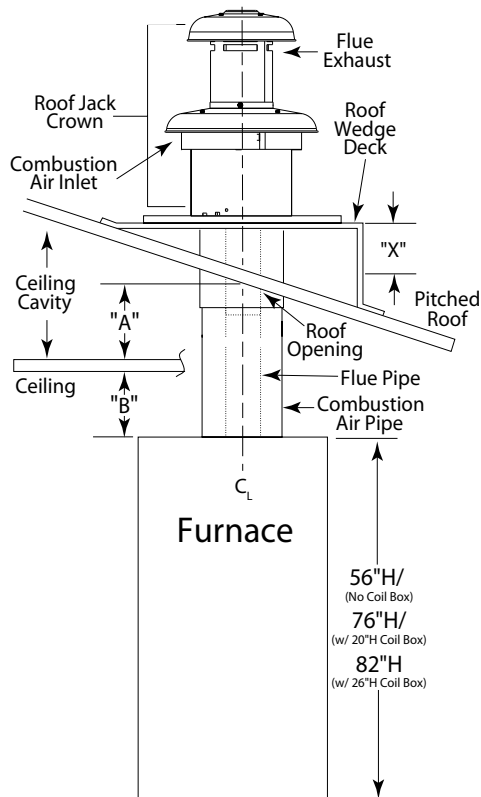
Part No.	Model No.	Used With	Package Quantity	Roof Jack Length Range	Pitch
903658	FAW1523-0A	M5SB, MGIE	Each.	15"-23"	0" \uparrow x 12" \rightarrow
903659	FAW2135-0A	M5SB, MGIE	Each.	21"-35"	0" \uparrow x 12" \rightarrow
903660	FAW2747-0A	M5SB, MGIE	Each.	27"-47"	0" \uparrow x 12" \rightarrow
903662	SAW2135-2A	M5SB, MGIE	Each.	21"-35"	2-1/2" \uparrow x 12" \rightarrow
903663	SAW2747-2A	M5SB, MGIE	Each.	27"-47"	2-1/2" \uparrow x 12" \rightarrow
903664	SAW3563-2A	M5SB, MGIE	Each.	35"-63"	2-1/2" \uparrow x 12" \rightarrow
920638	SAW5195-2A	M5SB, MGIE	Each.	51"-95"	2-1/2" \uparrow x 12" \rightarrow
903678A	SAW2747-4A	M5SB, MGIE	Each.	27"-47"	4" \uparrow x 12" \rightarrow
903665A	SAW3563-4A	M5SB, MGIE	Each.	35"-63"	4" \uparrow x 12" \rightarrow
903666A	SAW5195-4A	M5SB, MGIE	Each.	51"-95"	4" \uparrow x 12" \rightarrow

Roof Wedges



Part No.	Used With	Package Quantity	Wedge Pitch	Roof Pitch with 0" \uparrow x 12" \rightarrow Roof Pitch	Total Pitch with 2-1/2" \uparrow x 12" \rightarrow Roof Pitch	X-Value
903893	CMF2, CMF3, M5SB, MGIE	Each (4/Carton).	2-1/2" \uparrow x 12" \rightarrow	2" \uparrow x 12" \rightarrow	4-1/2" \uparrow x 12" \rightarrow	2-1/8"
				2-1/2" \uparrow x 12" \rightarrow	5" \uparrow x 12" \rightarrow	2-1/2"
903894		Each (4/Carton).	3" \uparrow x 12" \rightarrow	3" \uparrow x 12" \rightarrow	5-1/2" \uparrow x 12" \rightarrow	2-7/8"
				3-1/2" \uparrow x 12" \rightarrow	6" \uparrow x 12" \rightarrow	3-1/4"
903895		Each (2/Carton).	4" \uparrow x 12" \rightarrow	4" \uparrow x 12" \rightarrow	6-1/2" \uparrow x 12" \rightarrow	3-5/8"

Note: Not for use with 4/12 Roof Jacks.



Roof Jack Length = "A" + "B" + "X".

"X" is included only if a wedge is used, see table for "X-Value".

"A" = Roof Height - Ceiling Height.

"B" = Ceiling Height - Furnace Height.

Measure with respect to Roof Jack center-line.

The calculated Roof Jack Length must be within the "Range".

0" \uparrow x 12" \rightarrow Flashing flexes from 0/12 to 1/12.

2-1/2" \uparrow x 12" \rightarrow Flashing flexes from 1/12 to 4/12.

4-1/2" \uparrow x 12" \rightarrow Flashing flexes from 3/12 to 5/12.

HVAC Accessories

Roof Jack Extensions



Part No.	Description	Used With
901935	Roof Jack Extension, 10"H, Internal. Each.	M5SB, MGIE
903107	Roof Jack Extension, 18"H, Internal. Each.	
901937	Roof Jack Extension, 16"H, External. Each.	

Roof Jack Crown



Part No.	Description	Used With
104781000	Replacement Crown Assembly. Each.	CMF2, CMF3
903656	Roof Jack, Crown-Only (Post-Transit). Each.	M5SB, MGIE

Roof Jack Assemblies - CMF



Part No.	Description	Used With
104060000	SRJ1 Roof Jack, CMF, ≤12". Each.	CMF2, CMF3
104060003	SRJ2 Roof Jack, CMF, 13"-24". Each.	
104060015	SRJ3 Roof Jack, CMF, 25"-36". Each.	
104060018	SRJ4 Roof Jack, CMF, 37"-48". Each.	
104060024	SRJ5 Roof Jack, CMF, 49"-59". Each.	

Roof Flashing Kit



Part No.	Description	Used With
08560006	Roof Flashing Kit, VMC/A. Each.	VMA4, VMC2

Roof Jack Close-off Kit



Part No.	Description	Used With
08560009	Roof Jack Close-off Kit, VMC/A. Each.	VMA4, VMC2

Roof Jack Extension Assembly



Part No.	Description	Used With
104360001	SRJ Extension Assembly, 4"x18". Each.	CMF2, CMF3

Draft Cap



Part No.	Description
522086	Draft Cap for 4" Single Pipe Flue or Exhaust Fan. Each (8/Cartron).

Flashing



Part No.	Description
60850	8" x 50' Aluminum Flashing. Each.
601050	10" x 50' Aluminum Flashing. Each.
6010501	10" x 50' Galvanized Steel Flashing. Each.

HVAC Accessories

Metal Wyes



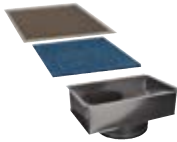
Part No.	Description	Used With
11121010	12"Ø x 2-10"Ø Metal Wye Adapters. Each.	RP7, RQ7 - Double Wide Applications
11121212	12"Ø x 2-12"Ø Metal Wye Adapters. Each.	
111412	14"Ø x 2-12"Ø Metal Wye Adapters. Each.	
11141414	14"Ø x 2-14"Ø Metal Wye Adapters. Each.	

Reducer/Increasesers



Part No.	Description	Used With
1112108	12"Ø to 10"Ø Round Duct Transition Reducer/ Increaser. Each.	RP7, RQ7
1114128	14"Ø to 12"Ø Round Duct Transition Reducer/ Increaser. Each.	

Return Air Boxes



Part No.	Description	Used With
115012	12" Ø Return Air Box with Grille and Filter. Each.	RP7, RQ7
115014	14" Ø Return Air Box with Grille and Filter. Each.	
111220BRN	Grille-Only for Return Air Box. Each.	

Foil Tape



Part No.	Description
602000	2" x 60yd UL181 Foil Tape. Each (16/Carton).
602509	2" x 50yd Foil Tape. Each (24/ Carton).

Cloth Tape



Part No.	Description
60260	2" x 60yd Black Cloth Duct Tape. Each (24/Carton).
602857B	2" x 60yd UL181 Black Cloth Duct Tape. Each (24/Carton).
602603	2" x 60yd Silver Cloth Duct Tape. Each (24/Carton).

Duct Collars



Part No.	Description	Used With
294941	12"Ø Duct Collar. Each.	RP7, RQ7
294942	14"Ø Duct Collar. Each.	RP7, RQ7

Pipe Hanger



Part No.	Description
1113038	3/4" x 100' Plastic Pipe Hanger Strap, 0.05" Thickness. Each (20/Box).
116507	3/4" x 100' 28-Gauge Galvanized Steel Pipe Hanger Strap. Each (10/Box).

Duct Collars



Part No.	Description
110010	10"Ø Duct Collar, 1" Tabs. Each.
110120	12"Ø Duct Collar, 1" Tabs. Each.

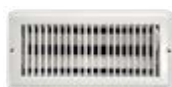
Woven Strap



Part No.	Description
6014932	Woven Polypropylene Fabric Strap, 1-3/4" x 300'. Each.

HVAC Accessories

Registers



Part No.	Description
11CL48B	4" x 8" Brown Metal Register. Each (20/ Carton).
11CL48W	4" x 8" White Metal Register. Each (20/ Carton).
11CL410B	4" x 10" Brown Metal Register. Each (20/ Carton).
11CL410W	4" x 10" White Metal Register. Each (20/ Carton).
11CL412B	4" x 12" Brown Metal Register. Each (20/ Carton).
11CL412W	4" x 12" White Metal Register. Each (20/ Carton).
1178481	4" x 8" White Plastic Register. Each (40/ Carton).
1178487	4" x 8" Brown Plastic Register. Each (40/ Carton).
1178401	4" x 10" White Plastic Register. Each (40/ Carton).
1178407	4" x 10" Brown Plastic Register. Each (40/ Carton).

Register Collars



Part No.	Description
11486	8"W x 4"L x 6"D Register Supply Collar. Each (48/ Carton).
114106	10"W x 4"L x 6"D Register Supply Collar. Each (100/ Carton).

Plastic Drawbands



Part No.	Description
110225	36" Drawbands. 50/Package.
110248	48" Drawbands. 50/Package.

Riser



Part No.	Description
110006	6" Pad-mount Heat Pump Riser. Each.

Filters



Part No.	Description	Used With
07540020	24" x 18" x 1" Spun Plastic Washable Filter. Each. Used with VMC, VMA.	N/A
110611	16" x 20" Spun Plastic Washable Filter, Trimmable. Each (100/ Carton).	
669064R	19-1/2" x 28" x 1/2" Washable Hogs Hair Filter. Each.	MG1E, M5SB, 669065R
669363R	20" x 22" x 1/2" Washable Hogs Hair Filter. Each.	MG2R, MG2S, 669065R
669065R	Filter Retainer Wire. Each.	MG1E, M5SB, MG2R, MG2S, 669064R, 669363R

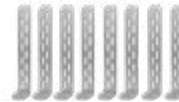
HVAC Accessories

Filters



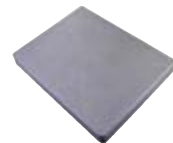
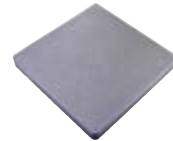
Part No.	Description	Used With
1196935689	19" x 16" Permanent Metal Mesh Washable Filter. 2-Pieces (Pair). (80 Pieces/ Carton).	N/A
1122515	20" x 16" x 1" Disposable Spun Fiberglass Filter. Each (12/Carton).	
1122517	20" x 20" x 1" Disposable Spun Fiberglass Filter. Each (12/Carton).	
669779	18" x 18" x 1" Disposable Spun Fiberglass Return Filter. Each.	E7EM, E7ED, MG*T, 1014501
668860R	18" x 20" x 1" Disposable Spun Fiberglass Return Filter. Each.	E7EM, E7ED, 1014501
1007623R	18" x 30" x 1" Disposable Spun Fiberglass Return Filter. Each.	E7ED, 1006731
1122517	20" x 20" x 1" Disposable Filter. 12-Pack.	1014501

Tie-Down Kits



Part No.	Description	Used With
1010032	Standard Condenser Hold-down/ Mounting Kit. Each.	RSAl, RSHI
NCUTD8KG	Condenser Tie-down/ Mounting Kit, 8-Brackets, 2017-certified. Each.	RSAl, RSHI
1013934	High-Wind Tie-Down Kit, Small Packaged, 4-Brackets, 2014-certified. Each.	RP7, RQ7

Equipment Pads



Part No.	Description
1124242D	24" x 24" x 2" UV Plastic AC Pad. Each.
1124243D	24" x 24" x 3" UV Plastic AC Pad. Each.
1133333D	33" x 33" x 3" UV Plastic AC Pad. Each.
1136363D	36" x 36" x 3" UV Plastic AC Pad. Each.
1132323D	32" x 32" x 3" UV Plastic AC Pad. Each.
1136483D	36" x 48" x 3" UV Plastic AC Pad. Each.
1145583D	45" x 58" x 3" 33lb UV Plastic AC Pad. Each.
H3652-4	36" x 52" x 4" 140lb Concrete AC Pad, Hurricane-150MPH. Each.
H3865-4	38" x 65" x 4" 170lb Concrete AC Pad, Hurricane-150MPH. Each.

HVAC Accessories

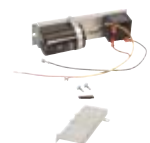
Digimotor Diagnostic Tool



Part No.	Description	Used With
921767	ECM Digimotor Diagnostic Tool, Broad Ocean. Each.	E7

This item is available as drop-ship only (not stocked), where a non-cancellable order minimum and longer lead-time may apply.

Universal Hard-Start Assist Kit



Part No.	Description
912933	Universal Hard-Start Assist. Each.

Fan Delay Kit



Part No.	Description
6918.5011	Fan Time-Delay Relay (TDR) Kit, 18s. Each.

Mild Weather Kit



Part No.	Description	Used With
921956	Mild Weather Kit, for Heat Pump Operation at Moderate Outdoor Ambient Temperatures. Each.	RSHI

Electric Heater Kits



Part No.	Description	Used With
H3HK005H-01C	Heater Kit, 5kW, 240/1/60. Each.	RP7, RQ7
H3HK008H01B	Heater Kit, 8kW, 240/1/60. Each.	
H3HK010H-01C	Heater Kit, 10kW, 240/1/60. Each.	
H3HK015H-01C	Heater Kit, 15kW, 240/1/60. Each.	

Thermocouple Kit



Part No.	Description
11923	30" Thermocouple Kit. Each (6/Carton).

Circuit Adapter



Part No.	Description	Used With
1039295	4-Pole, Single Circuit Adapter (less than 3 breakers). Each.	RP7, RQ7

Circuit Breaker



Part No.	Description	Used With
913554	1-Phase, 2-Pole, Circuit Breaker, 60 A. Each.	RP7, RQ7

Thermal Expansion Valves (TXVs)



Part No.	Description	Used With
18R72DB0003	Thermal Expansion Valve, 1.5-3 Ton. Each.	1829S4A, 1829M4A, 1830S4A, 1836S4A, 1836M4A
18R72DB0004	Thermal Expansion Valve, 2.5-5Ton. Each.	1837S4A, 1844S4A, 1845S4A, 1847S4A, 1847M4A, 1851S4A, 1854S4A, 1854M4A, 1855S4A, 187848S4A, 187848M4A
18R72DB0044	Thermal Expansion Valve, 1856 Coil. Each.	1841S4A, 1856S4A, 1856M4A

HVAC Accessories

Thermostats



Part No.	Description
02538747000	Heating and Cooling 4-Wire Pigtail Thermostat. Each.
111001	Cool-Only Thermostat. Each.
111002	Heat-Only Thermostat. Each.
111003	Heat and Cool 5-Wire Thermostat. Each.
111004	Programmable Digital Heat Pump Thermostat. Each.
111005	Non-Programmable Digital Heat Pump Thermostat. Each.
111006	Programmable Digital Thermostat. Each.
111007	Non-Programmable Digital Thermostat. Each.
111010	Digital Multifunction, Dual Fuel Capable Thermostat. Each.



Disconnect Switch



Part No.	Description
598064	Disconnect Switch, Non-fused, 60 Amp. Each.

Electrical Box Connectors



Part No.	Description
598042	1/2" Straight Electrical Box Connector. Each (25/Carton).
598043	3/4" Straight Electrical Box Connector. Each (10/Carton).
598045	1/2" 90° Elbow Electrical Box Connector. Each (10/Carton).
598046	3/4" 90° Elbow Electrical Box Connector. Each (10/Carton).



Conduit



Part No.	Description
598040	1/2" x 100' Conduit. Each.
598041	3/4" x 100' Conduit. Each.

Conduit Assemblies



Part No.	Description
598079	3/4" x 6', #6 Wire-Whip Conduit Kit HVAC equipment power connections. Each.
598077	3/4" x 6', #8 Wire-Whip Conduit Kit HVAC equipment power connections. Each.
598071	1/2" x 4', #10 Wire-Whip Conduit Kit HVAC equipment power connections. Each.
598073	1/2" x 6', #10 Wire-Whip Conduit Kit HVAC equipment power connections. Each.

Style Crest® Offers a Wide Variety of Manufactured Housing Products

Revolv® Indoor Comfort Products

Manufactured Housing Furnaces

E7 100% AFUE Electric Furnaces
MG2S 96% AFUE 2-Stage Gas
MG2R 95% AFUE Gas
VMC & VMA 95% AFUE Gas
MG3P 92% AFUE Gas
MG1E 80% AFUE Gas
M5SB 83% AFUE Oil
CMF 80%+ AFUE Gas & Oil

Central-Air Split System Condensers

RSA AccuCharge® 13 & 14 SEER
Air Conditioners
RSH AccuCharge 14 SEER Heat Pumps
with Cooling
RSA Sweat Fit 13 & 14 SEER
Air Conditioners
RSH Sweat Fit 14 SEER Heat Pumps
with Cooling

Manufactured Housing Indoor A-Coils

AccuCharge Tube-In-Fin R-410A
AccuCharge Micro-Channel R-410A
Sweat Fit Tube-in-Fin R-410A
Sweat Fit Micro-Channel R-410A
MHSC Tube-in-Fin Service Coils

Self-Contained Packaged Units

RP7 Packaged Air Conditioners
RQ7 Packaged Heat Pumps with Cooling
H3HK Electric Heater Assemblies

HVAC System Accessories

Thermostats & Retrofit Controls
Wyes, Collars, Flex-Duct, Registers,
& Grilles
Electrical, Pads, & Mounting Hardware

OEM & Generic Replacement Parts



DURA GRIP II™
Steps & Rails

PREMIUM PLUS SKIRTING
HIGH PERFORMANCE VINYL SKIRTING

Set Up & Transportation

Minute Man® – Stabilization Systems

LLBS Lateral & Longitudinal Struts

Tie Down – Stabilization Systems

Strut (Xi2) & Strap (Vector)
- Lateral & Longitudinal

Anchor Products

Soil, Coral & Cross Drive (Rock)
Double-Tension Head & Eye
ABS & Steel Stabilizer Plates
Boards, Wedges, Piers & Pier Pads
Strap Assemblies with Connectors
Tools & Accessories

Transportation Products

Tarps & Plastic Sheeting
Bottle Jacks & Repair Kits
Flags & Signs
Wheel & Axle Replacement Parts

Plumbing, Electrical & Hardware

Lavatory

Faucets & Faucet Accessories
Tubs, Showers, Surrounds,
& Accessories
Toilets, Sinks, & Replacement Parts

Water Heaters & Replacement Parts

Indoor Plumbing Supplies
Outdoor Plumbing Supplies
Tools & Fasteners
Roof Coatings & Repair
Adhesives, Sealants, & Tapes
Indoor/Outdoor Electrical Fixtures
& Parts

Appliances

Electric Range
Dishwasher
Refrigerator
Washer
Dryer



Exterior Products

Foundation Covers

Titan XTERIOR Prime
Titan XTERIOR Elite - Insulated
Mason's Collection - Brick & Rock
Vinyl Skirting - Premium Plus & Eagle
NOVIK® Shakes, Stone & Accents

DuraGrip™ Fiberglass Coated Steps

The 72" & 48" Wide
The Platform Step
The Economaster
Economy Steps

Harbour Crest™ Vinyl Siding & Accessories

DuraSpan® Soffit & Accessories

Perrenia

Open Louvered Shutters
Raised Panel Shutters
Vents, Mounts, & Blocks

Doors & Windows

Exterior Doors

Six-Panel Steel Exterior Doors
Combo Exterior Doors
Exterior Storm Doors
Decorative Exterior Doors
Rolling Glass Doors
French Doors

Interior Doors

White 6-Panel Interior Doors
White or Imperial Oak
Smooth, Embossed Interior Doors

Interior Molding & Trims

Windows

Aluminum Vertical Sliders
Aluminum Vertical Self Storing
Storm Windows
Vinyl Single-Hung Double-Pane Windows
Skylights

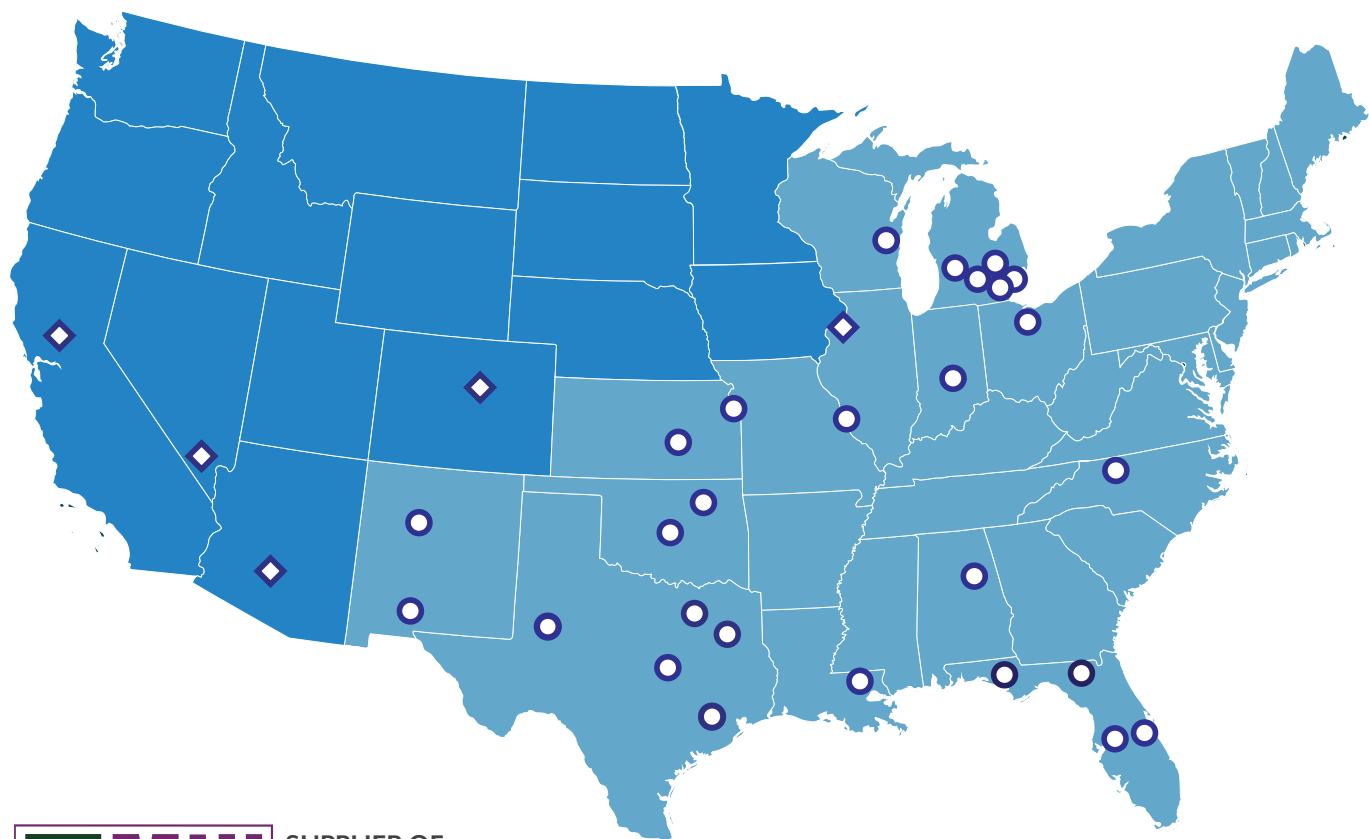
Door & Window Replacement Parts & Accessories



800.945.4440
www.stylecrestinc.com

The Only National Supplier

Committed to Your Success from Coast to Coast



SUPPLIER OF
THE YEAR
2020

1996 | 1998 | 1999 | 2014 | 2015 | 2017 | 2018

○ Style Crest

◇ Partner Locations

HVAC | Set Up Materials | Foundation Covers | Vinyl Siding
Doors & Windows | Steps & Rails | Plumbing | Electrical



800.945.4440
www.stylecrestinc.com